

Merstham Recreation Ground refurbishment

Newsletter 6 - May 2025

Welcome to the sixth edition of the Merstham Rec refurbishment newsletter. Read on for a progress update on our open space project in Merstham.

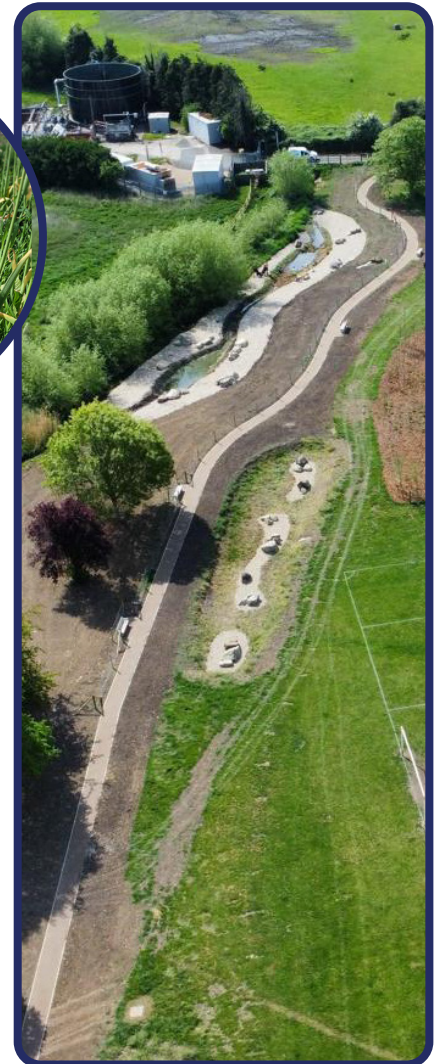
Work on site started in May 2024 to provide:

- a new pavilion with a café kiosk, toilets, changing rooms, with solar panels and a green roof
- a new play area with equipment for children of all ages and abilities
- a parkour course for over 12s
- an outdoor gym
- an improved network of footpaths with better accessibility for wheelchairs and buggies
- a picnic area and community orchard
- new trees, landscaping and swales to improve drainage.

In this issue

In this edition you can read about:

- what's on offer at the new-look Rec
- other works to be completed soon
- new football pitch at Battlebridge Rec
- how to keep in touch.



What's on offer at the new-look Rec

Over the last two months, our contractor Blakedown Landscapes has been busy completing the remaining works in the Rec, culminating with the opening of the new-look open space on Friday 9 May.

The play area offers a range of new equipment for different ages and abilities, climbing rocks and a sunshade. New seating, together with picnic tables, will allow for a longer and more comfortable stay for parents and carers.

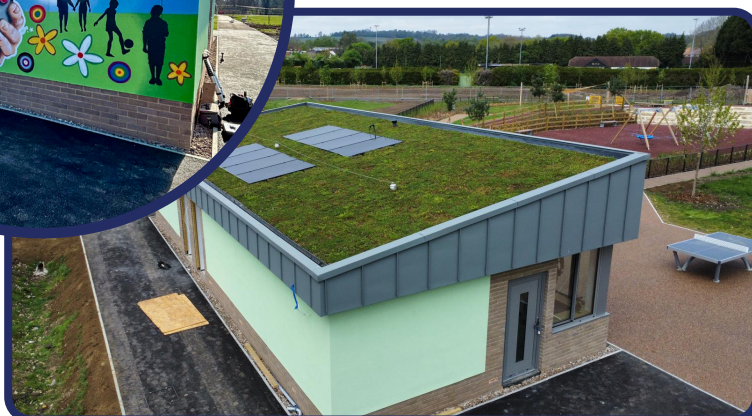
For active residents, an outdoor gym has been installed, together with table tennis tables and a new Parkour course. The Parkour is the first to be delivered in the borough and looks really exciting - it challenges residents in running, jumping, vaulting, climbing, crawling or rolling over difficult obstacles.

The tennis court and MUGA have been refurbished with new fencing and surfacing.

The water channel works have been completed with planted banks creating new areas for wildlife and flood water storage, together with gravel margins and boulders, providing beautiful natural area for future public use. A temporary fence has been installed along the water channel to allow the nature to recover. We expect to remove this fence and open the area in summer 2026 once planting has established.

Many new trees, an orchard, areas of woodland and meadows have been planted to contribute to the local natural character and improve biodiversity for plants and wildlife in the area.

Art has also been incorporated into the design, with a mural on the pavilion that expresses the community embracing its youth and helping them to grow and flower. The mural is the result of a collaboration between creative year 9 students from Merstham Park School and local artist Uncle Stubble. In the Parkour area, additional art elements illustrate the movement of the sport and animate the space.



Other works to be completed soon

Most of the open space works are complete, although there are some things that the contractor needs to finish off. These include:

- Seating in the new raised area by the Albury Road entrance into the Rec - this area was added into the contract at later stage and the proposed furniture has a long lead-in time. Furniture will be installed once it is delivered.
- The tennis court and MUGA are completed, but we are planning to add colour to them. The painting will be carried out in the next couple of weeks.
- Water fountain in the play area - our contractor is liaising SES Water for the water connection, the date for which is to be confirmed by SES Water.
- Old green shed on the pitches - this is to be demolished and replaced with a storage container for the local sports clubs. The date for this is subject to UK Power Network (UKPN) and Shell (as energy provider) carrying out the electrical switch work. The contractor will then demolish the shed and install the new container.
- Electrical structure close to the Merstham Football Club – this will also be demolished and replaced with a new electrical cabinet (already installed). As with the shed, our contractor is liaising with UKPN, Shell and Merstham Football Club to agree a date to carry out the electrical changes. The contractor will then demolish the old structure.
- Signage - new signage maps and interpretation boards will be placed around the Rec. These have been ordered and are being manufactured by a specialist signage supplier. The supplier will install the new signs during the summer.
- Pavilion - works are slightly behind however the contractor expects the internal works to be completed in the next two to three weeks.
- Pavilion café kiosk tenant – the Council has received five offers to run the kiosk and is making the required checks and evaluating the offers. We will update on the successful tenant and opening timings once they are appointed.
- CCTV: We have plans to install CCTV in Merstham Rec. This is part of the wider public realm CCTV improvements planned in the borough, being delivered in 2026.

New football pitch at Battlebridge Rec

The new 9v9 football pitch delivered at Battlebridge Recreation Ground is now complete and has been handed over by the contractors to the Council. It provides a new, high quality grass pitch that will be available for use by local football clubs and their youth teams next football season.

The construction of the new pitch used a total of 400 tonnes of imported topsoil and over 200 tonnes of sport sand to create a quality base for the new grass pitch. This new quality pitch will support the football development in the local area and is ready for the 2025 - 2026 football season.



How to keep in touch

We will be issuing a newsletter every five to six weeks to provide regular progress updates on the project. You can see the various editions of the newsletter on our website.

You can also keep in touch with us in a variety of ways:

- Website: **reigate-banstead.gov.uk/Merstham-Rec**
Email: **MersthamRec@reigate-banstead.gov.uk**
Social media: **[@ReigateBanstead](https://www.instagram.com/ReigateBanstead)**