

Working with you to improve Merstham Recreation Ground



Improving Merstham Rec

The Council is investing £1.5m to refurbish Merstham Recreation Ground, which we plan to complete by 2022.

It is really important to us that we deliver improvements that you want.

So, last year we undertook a survey of local residents and users about what we might do in the Rec.

We received a fantastic response with over 700 local residents and groups completing our questionnaires – a big thank you to everyone who took part!

Your feedback was really helpful in helping us to understand what you like and don't like about the Rec and what you would like to see in the future.

Since then we have been really busy.

We have appointed a professional design team to take the project forward.

We have set up a residents' focus group to talk to the design team about different ideas and solutions.

And we have been talking to lots of groups: Age Concern, Café Mix, Merstham Baptist Church, YMCA, Merstham Football Club, Merstham Cricket Club, Merstham Millennium Trust and Merstham Community Facility Trust, as well as children from Merstham Park School.

All of this input has been really important in helping us to understand what you want.

We are now excited to share the emerging ideas and plans with you.

The Vision for Merstham Rec



Our vision

Building on what everyone has told us we have developed a vision for the Rec. We want to create a high quality and valued green space for Merstham that will offer something for everyone. We want it to be a place to meet, socialise, play and be active and a place where people can enjoy access to nature and relax.

Our objectives

To help deliver this vision we think that it is important that we:

- Provide high quality play for children and young people of all abilities
- Create more opportunities for local people to participate in a range of sports
- Help local people who do not participate in sport to keep fit and active through informal activities like walking
- Create different places for people to meet and to come together as well as quieter places for people to enjoy and
- Protect and enhance the natural environment and people's access to nature.

We also want to ensure that what we do is:

- Inclusive to ensure as many people as possible can enjoy the Rec
- That it is environmentally sustainable
- That it is safe and
- It is easy to maintain.



The masterplan

Our masterplan for Merstham Rec shows how we will deliver the overall vision for the site including what we propose and where things will be.

A hub for the community

A key part of the Master Plan is a new community hub at the centre of the Rec, which will be the focus for a range of activities centred around a new pavilion building. Within the hub will be a series of linked but dedicated spaces for children to play, for young people to hang out, for people to keep fit and active or to just sit, meet and relax.

All-weather pathways

A series of new all-weather pathways will be provided. These include two new routes through the park - one connecting Albury Road and Weldon Way / Taynton Drive, and the other a circular path around the park.

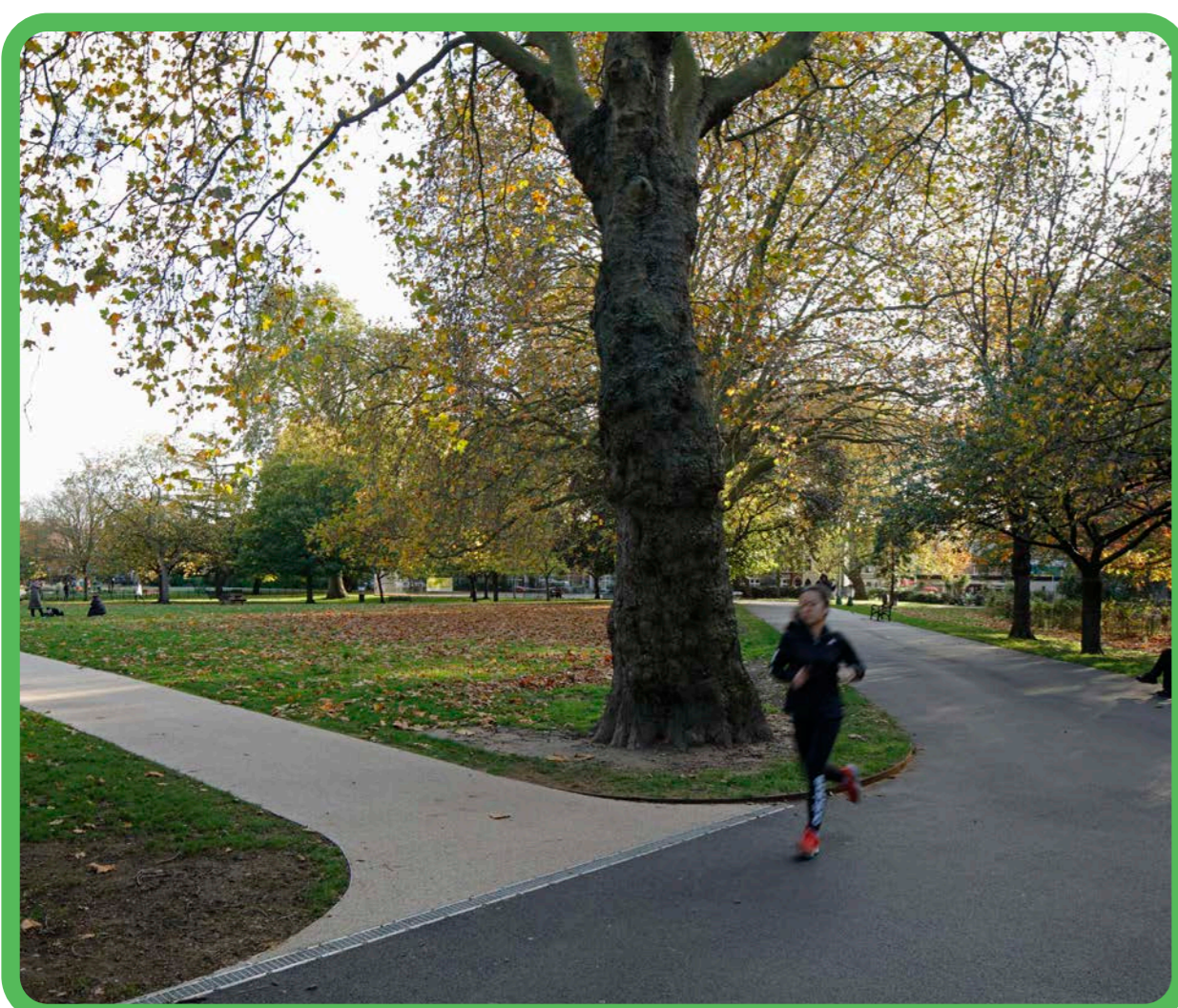
New planting

Informal planted and wooded areas around the Rec's edge will provide somewhere that people can sit and enjoy nature and opening up the water channel to the east of the site.

Sports pitches

Importantly a large area will be retained for grassed pitches, which will be reconfigured to play mini, junior and adult football throughout the winter and cricket in the summer.

- Improve drainage (with swales)
- New pavilion. Include changing rooms, toilets and a café kiosk



New all-weather paths



Planted and wooded areas



Swales to improve drainage

The masterplan

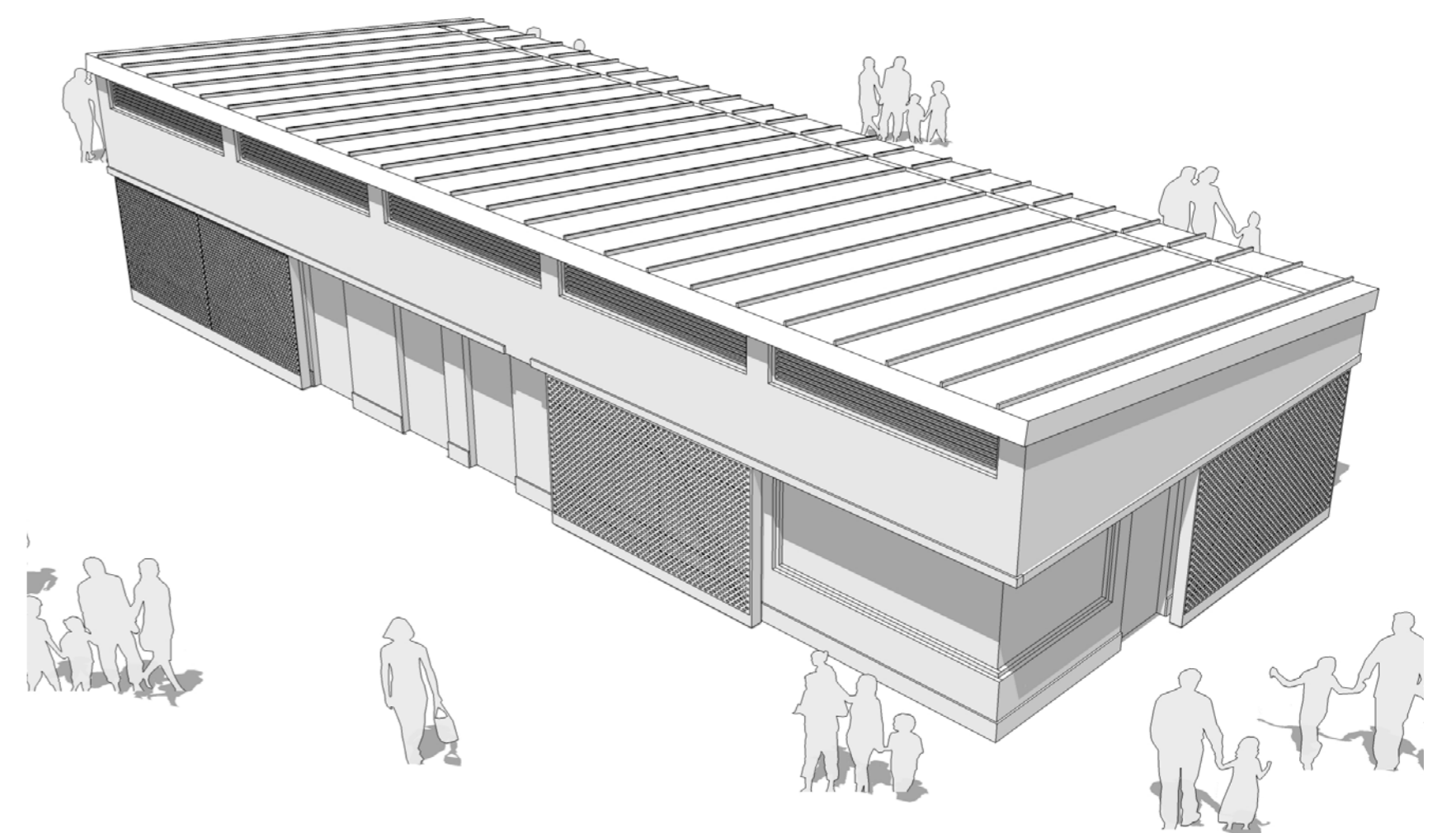
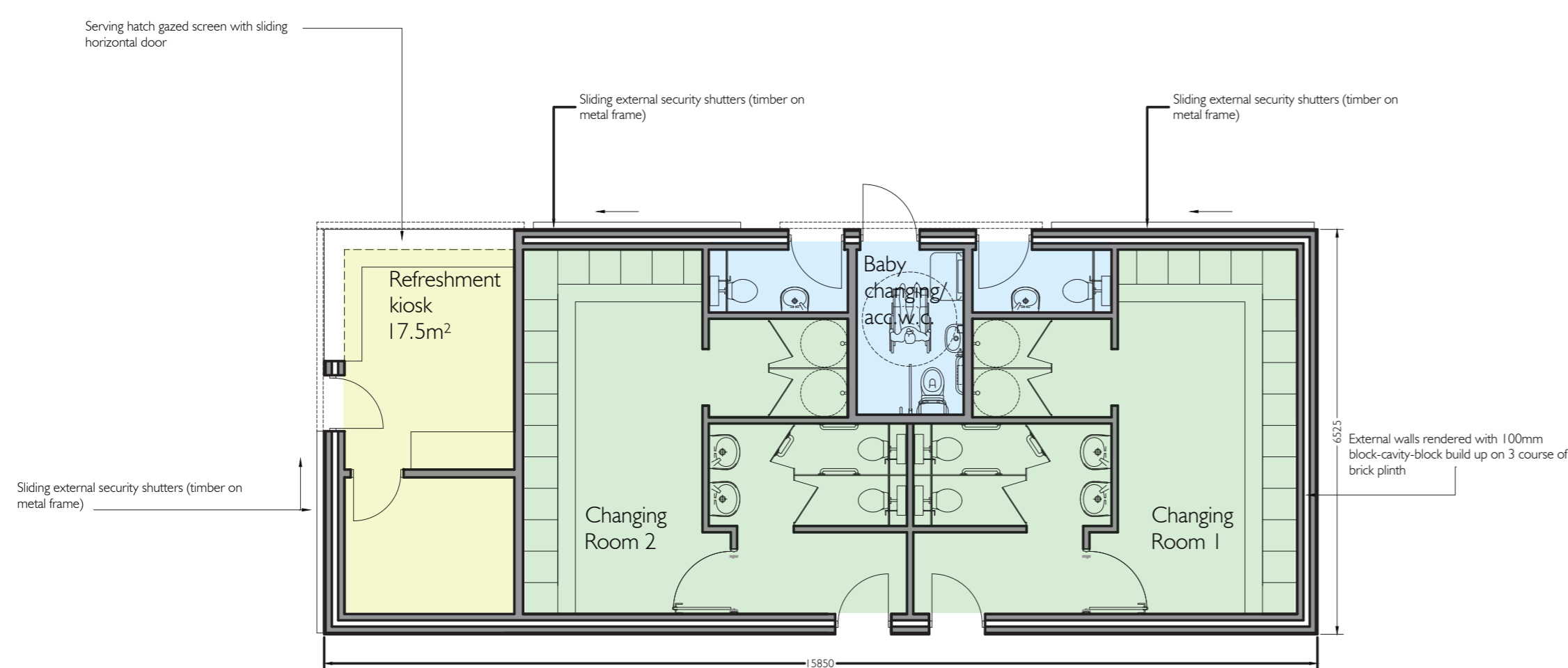


Delivering the Rec refurbishment – key priorities

Based on what local people have told us and the total budget that we have, we are proposing to deliver an exciting range of new things in the Rec which are shown within the area marked red on the plan. This includes:

A new pavillion

With a refreshment kiosk to provide drinks and snacks, toilet facilities and two sports changing rooms.



Improved paths

Providing two new all-weather routes to connect Albury Road and Weldon Way and a route around the edge of the Rec.



Improved drainage

Introduction of swales (sunken areas that are planted) to help drain and store water around the Rec. These will help reducing the flood risk, draining the pitches quicker, while improving the local biodiversity



A community garden

A community garden with an orchard and a central green with a picnic area.

Wildlife areas

Planted and woodland areas to improve biodiversity and places for people to sit and relax.

A play area for small children

An exciting new play area to cater for children of all ages and abilities, with both formal equipment and more natural areas, and including equipment aimed at under 5s and 5s to 11s.



A youth facility

A dedicated place aimed at children from age 12 and over, with a youth shelter and parkour area for the over 12s, will provide something very different from elsewhere.



Equipment to keep fit

A dedicated gym and a trim trail for people of all ages to keep fit and active



Improved grass pitches

We will look to improve the quality of the grass pitches and through a slight re-design we aim to make better use of them and to introduce other sports, like providing a cricket pitch.

Have your say

What do you think about these ideas?

Other future priorities

If and when the Council is able to secure more funds, we propose to deliver a number of other improvements, which are highlighted in blue on the plan. These include:

Area 1: Albury Farm Scheduled Ancient Monument

Did you know there used to be a medieval farm with two moats on the site?

If we secure more money, we would like to protect this special area, provide improved paths and install new planting, seating and information boards.

The estimated cost of this is £90,000



Area 2: Western path upgrade

We know that the western pathway is well used by pedestrians and cyclists.

If we secure more money, we would like to extend the width of the path to provide a wider and better path for cyclists and pedestrians who use the route to get to the train station, to home and to other green spaces.

The estimated cost of this is £110,000

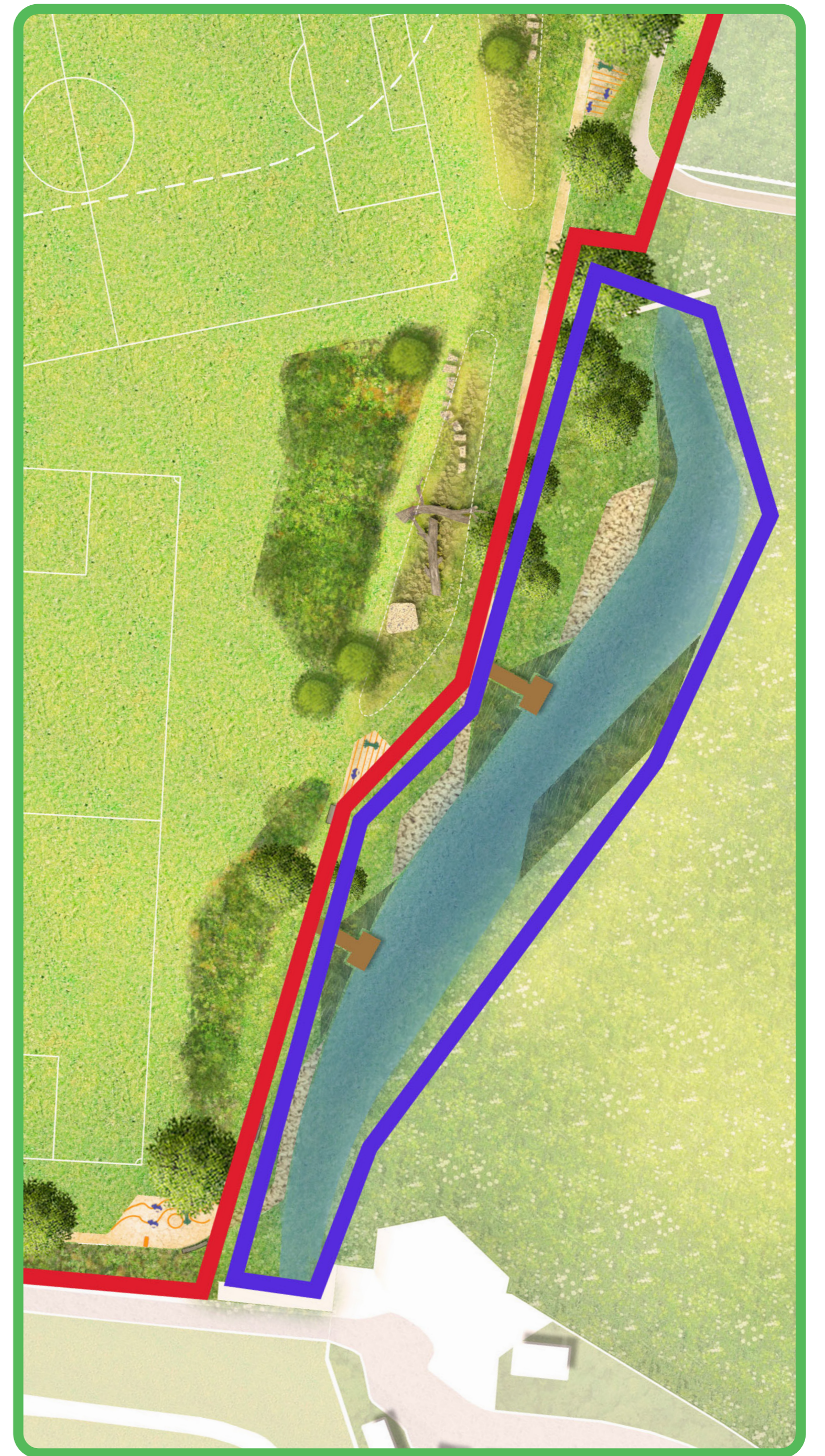


Area 3: Water Channel Naturalisation

We think there is a great opportunity to improve the water channel to the east of the recreation ground to provide better access to the water and to improve biodiversity and water quality.

If we secure more money, we would like to widen the channel, introduce new planting and provide platforms to enable you to get closer to the water.

The estimated cost of this is £175,000

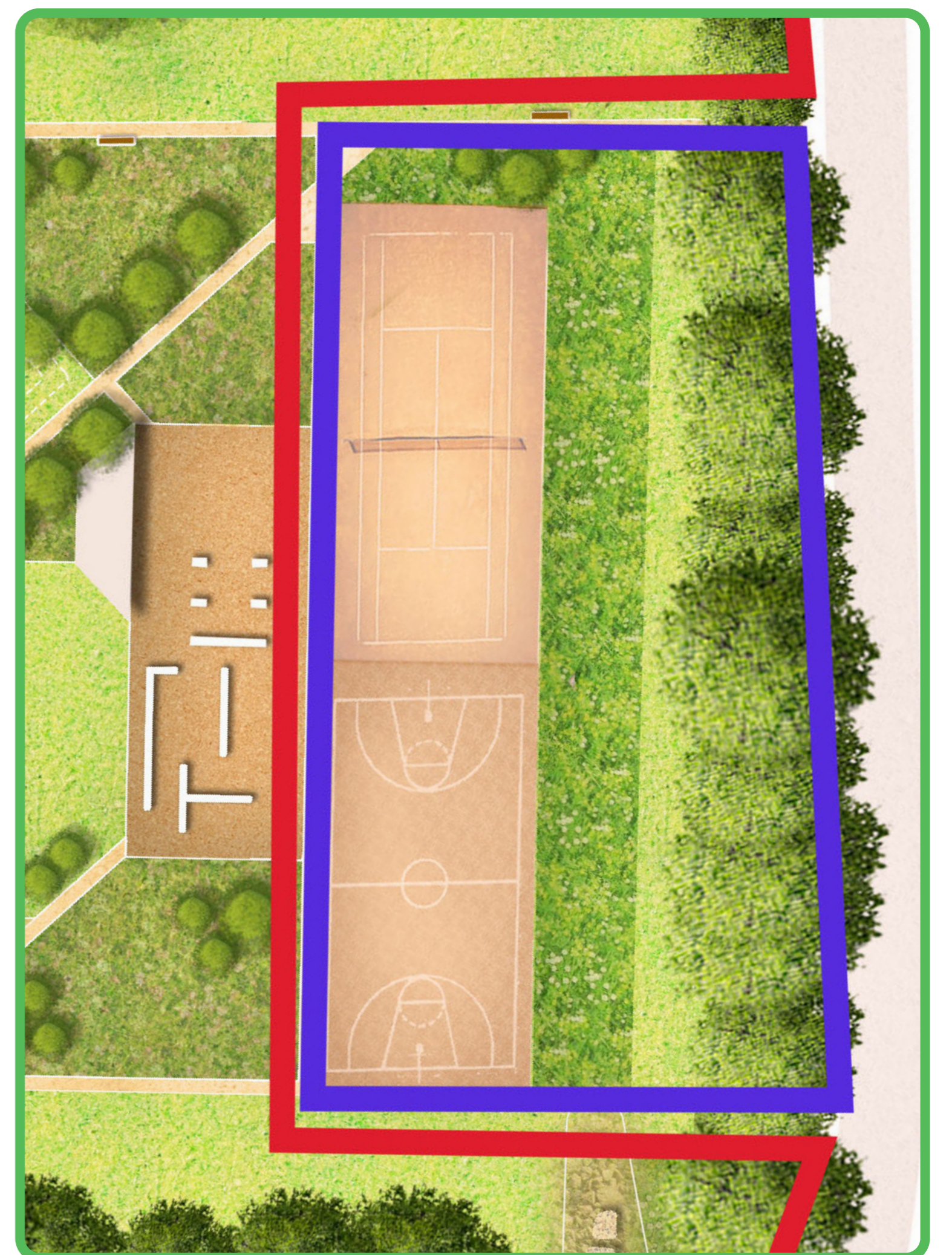


Area 4: MUGA and Tennis Court

We know the existing MUGA and tennis courts are popular and a bit tired.

If we secure more money we would like to resurface these, provide new fencing and equipment.

The estimated cost of this is £160,000



Which of these is important to you?

Next steps and timescales

Design /Development Aug to Oct 2021

Further consultation with residents – Sep / Oct 2021

Submission of a detailed planning application – Nov 2021

Finalise detailed design Information and issue tender to contractors – Jan / Feb 2022

Construction works start spring 2022

Completion in winter 2022

Your feedback

Tell us what you think on our short feedback form. You can do it online on: www.smartsurvey.co.uk/s/mersthamrec-summer2021/. The Survey will close on 5th of September.

You can also send us an email to: MersthamRec@reigate-banstead.gov.uk with any additional comments or concerns.

We are not collecting any personal data, but if you have any questions about our use of your data please contact our Data Protection Officer at data.protection@reigate-banstead.gov.uk or 01737 276000.

You can also find the details of the proposals on the project website: www.reigate-banstead.gov.uk/MersthamRec

