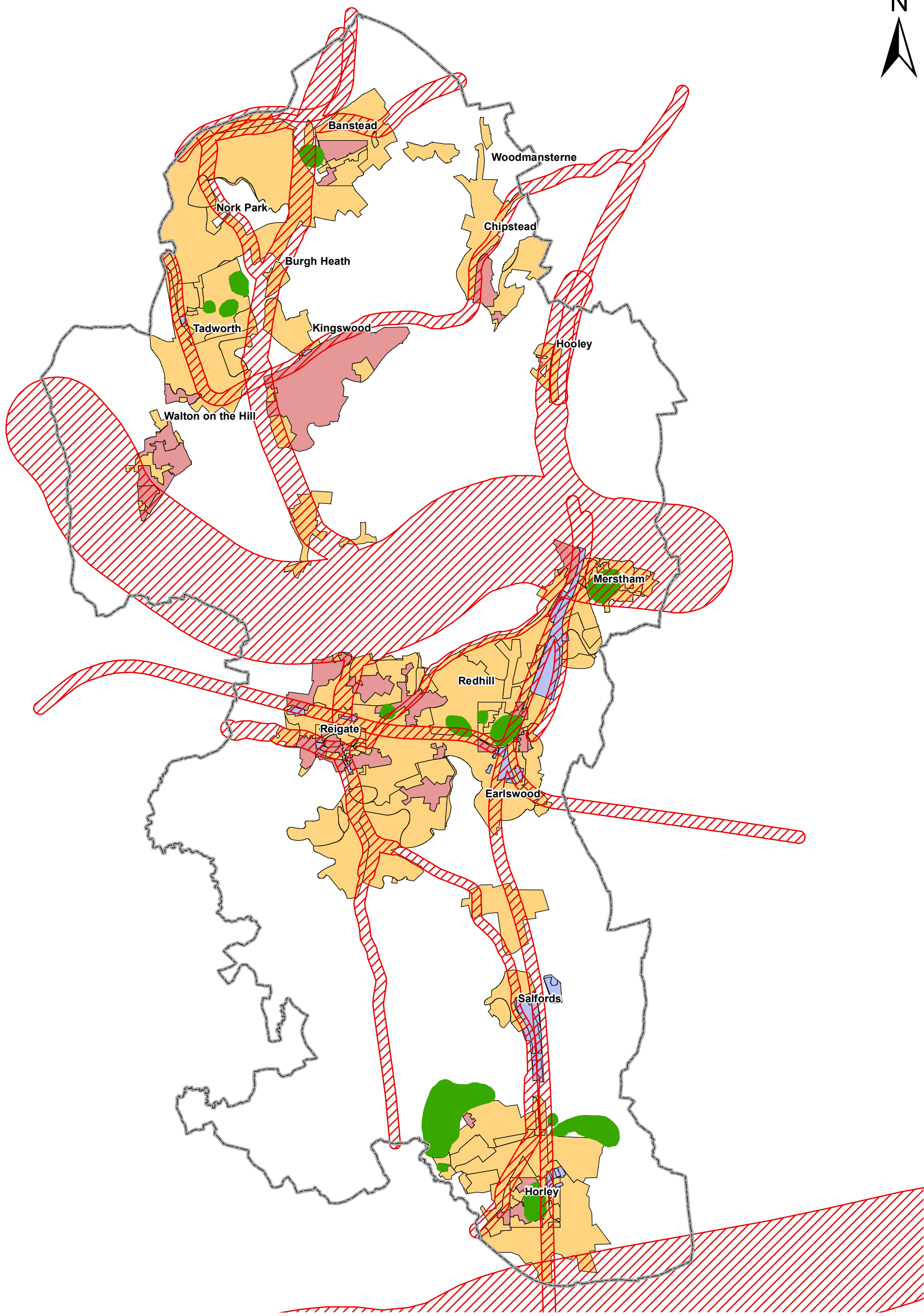


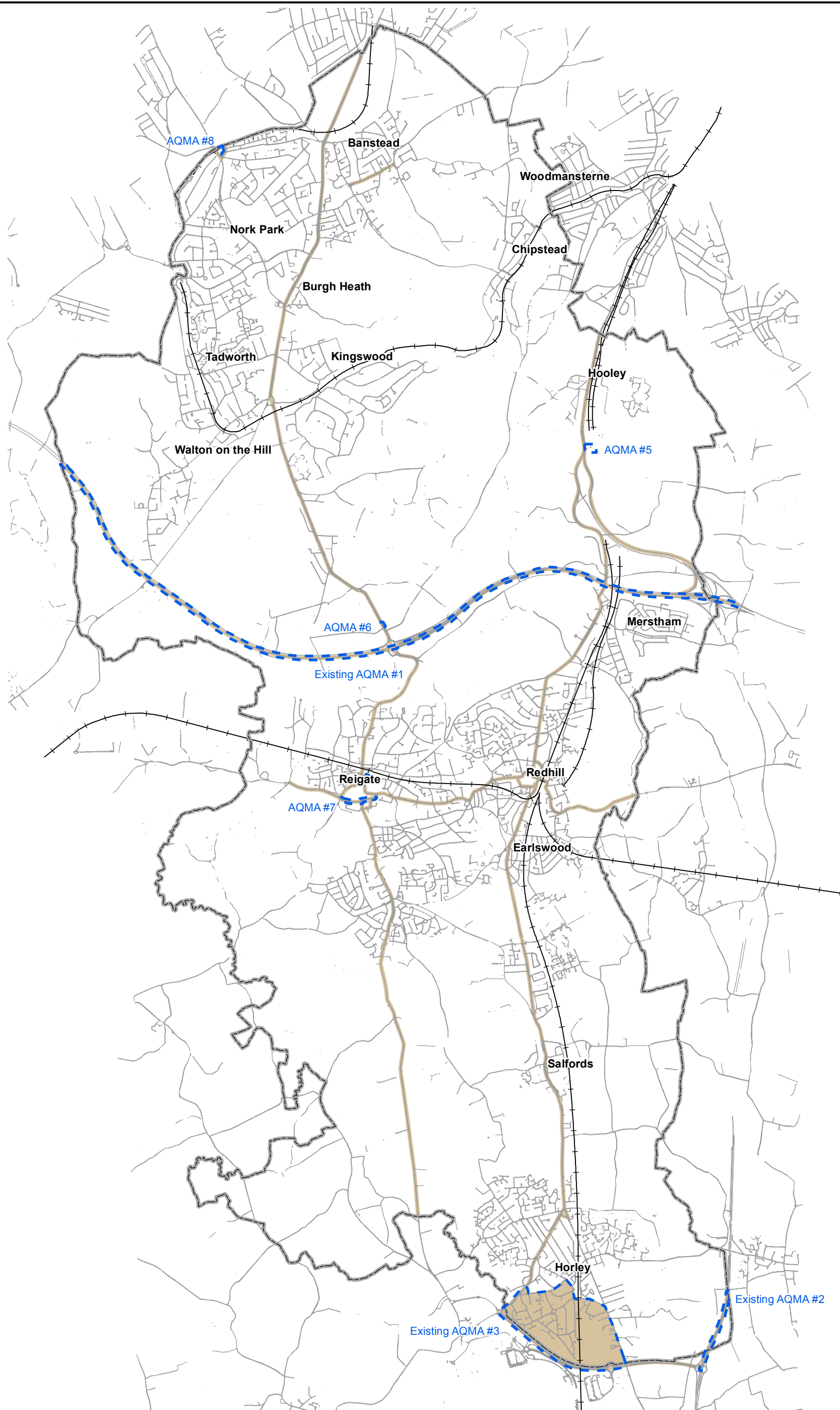
This map is reproduced from Ordnance Survey material with the permission of Ordnance Survey on behalf of the Controller of Her Majesty's Stationery Office © Crown copyright. Unauthorised reproduction infringes Crown copyright and may lead to prosecution or civil proceedings. Licence no 100019405 - 2007

| | | | | | | |
|--|--|--------------------------------------|------------|---|--|--|
| Legend  Borough Boundary  Roads  Railways  Indicative Area Where Road Noise Issues Need To Be Considered  Indicative Area Where Rail Noise Issues Need To Be Considered  Indicative Area Where Air Traffic Noise Issues Need To Be Considered |  | CLIENT | TITLE | | | |
| | | REIGATE AND BANSTEAD BOROUGH COUNCIL | | Figure 4.1 | | |
| | | PROJECT | | Broad Indication of Zones where Noise Issues should be Considered | | |
| BOROUGH OF REIGATE AND BANSTEAD: LANDSCAPE CHARACTER ASSESSMENT | | SCALE | DATE | DRAWN | | |
| | | 1:60,000 at A3 | 15.05.2007 | AMG | | |



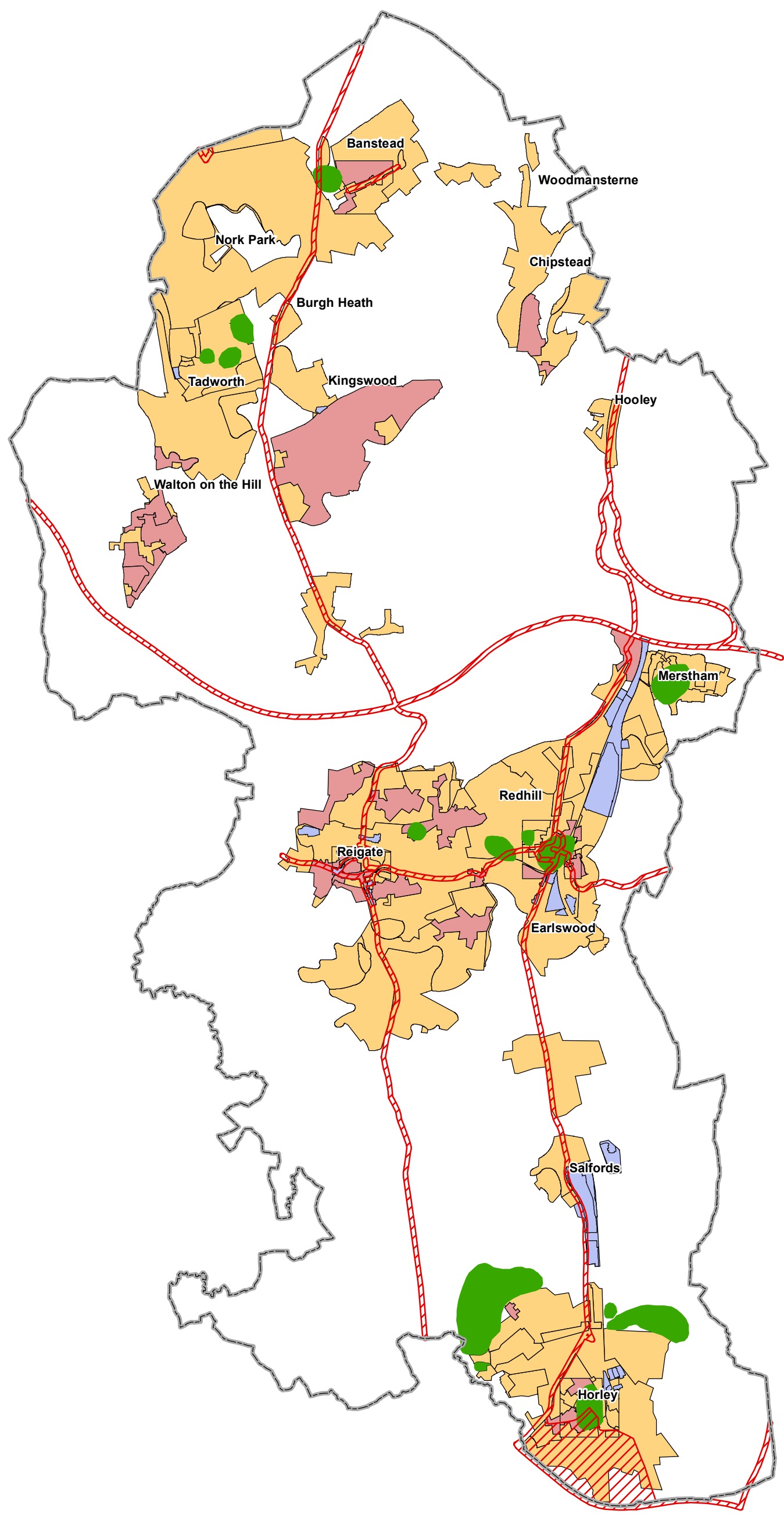
This map is reproduced from Ordnance Survey material with the permission of Ordnance Survey on behalf of the Controller of Her Majesty's Stationery Office © Crown copyright. Unauthorised reproduction infringes Crown copyright and may lead to prosecution or civil proceedings. Licence no 100019405 - 2007

| | | | | | | |
|---|--|--|---|---|--------------------|-------------|
| Legend Borough Boundary Indicative Areas Where Noise Issues Need to be Considered Locations Potentially With Small/Medium Scale Opportunities, High Sensitivity Locations Potentially With Small/Medium Scale Opportunities, Medium Sensitivity Locations Likely to have Most Development Potential Employment Areas | | | CLIENT REIGATE AND BANSTEAD BOROUGH COUNCIL | TITLE Figure 4.2 Indicative Areas Where Noise Issues Need to be Considered and Development Potential | | |
| | | | PROJECT BOROUGH OF REIGATE AND BANSTEAD: LANDSCAPE CHARACTER ASSESSMENT | SCALE 1:60,000 at A3 | DATE 25.03.2008 | DRAWN CG |



This map is reproduced from Ordnance Survey material with the permission of Ordnance Survey on behalf of the Controller of Her Majesty's Stationery Office © Crown copyright. Unauthorised reproduction infringes Crown copyright and may lead to prosecution or civil proceedings. Licence no 100019405 - 2007

| | | | | | |
|--|--|---|--|--------------------|--------------|
| Legend  Borough Boundary  Roads  Railways  AQMA  Other Locations where Air Quality Issues Should be Considered |  | CLIENT REIGATE AND BANSTEAD BOROUGH COUNCIL | TITLE Figure 5.1 Indicative Locations Where Air Quality Issues Should Be Considered | | |
| | | PROJECT BOROUGH OF REIGATE AND BANSTEAD: LANDSCAPE CHARACTER ASSESSMENT | SCALE 1:60,000 at A3 | DATE 15.05.2007 | DRAWN AMG |
| | | | | | |



This map is reproduced from Ordnance Survey material with the permission of Ordnance Survey on behalf of the Controller of Her Majesty's Stationery Office © Crown copyright. Unauthorised reproduction infringes Crown copyright and may lead to prosecution or civil proceedings. Licence no 100019405 - 2007

| | | | | | |
|--|--|---|---|------|-------|
| Legend  Borough Boundary  Employment Areas  Locations Where Air Quality Issues Should be Considered  Locations Potentially With Small/Medium Scale Opportunities, High Sensitivity  Locations Potentially With Small/Medium Scale Opportunities, Medium Sensitivity  Locations Likely to have Most Development Potential |  | CLIENT REIGATE AND BANSTEAD BOROUGH COUNCIL | TITLE Figure 5.2 Indicative Areas Where Air Quality Issues Need To Be Considered And Development Potential | | |
| | | PROJECT BOROUGH OF REIGATE AND BANSTEAD: LANDSCAPE CHARACTER ASSESSMENT | SCALE | DATE | DRAWN |
| | | 1:60,000 at A3 | 25.03.2008 | CG | |