

Scale 1:10,000

© Crown Copyright and database right 2019. Ordnance Survey licence number 100019405. Produced by Reigate and Banstead Borough Council



**Growing a prosperous economy**

- Employment Areas (EMP1; EMP2)
- Town Centre Boundaries (RET2)
- Primary Shopping Areas (RET2)
- Primary Retail Frontage (RET1)
- Secondary Retail Frontage (RET1)
- Local Centre Boundaries (RET3)
- Retail Warehouse Areas (RET6)

**Building self reliant communities**

- Gatwick Open Setting (NHE1)
- Special Area of Conservation (NHE2)
- Sites of Special Scientific Interest (CS2; NHE2)
- Sites of Nature Conservation Importance (NHE2)
- Area of Outstanding Natural Beauty (CS2; NHE1)
- Area of Great Landscape Value (CS2; NHE1)
- Residential Areas of Special Character (DES3)
- Conservation Areas (CS4; NHE3; NHE9)
- Potential Sites of Nature Conservation Importance (NHE2)
- Local Nature Reserves (CS2; NHE2; NHE4)
- Ancient Woodlands (CS2; NHE3)
- Regionally Important Geological Sites (NHE2)
- Riverside Green Chain (NHE4)
- Rural Surrounds of Horley (NHE6; NHE7)

**Place shaping**

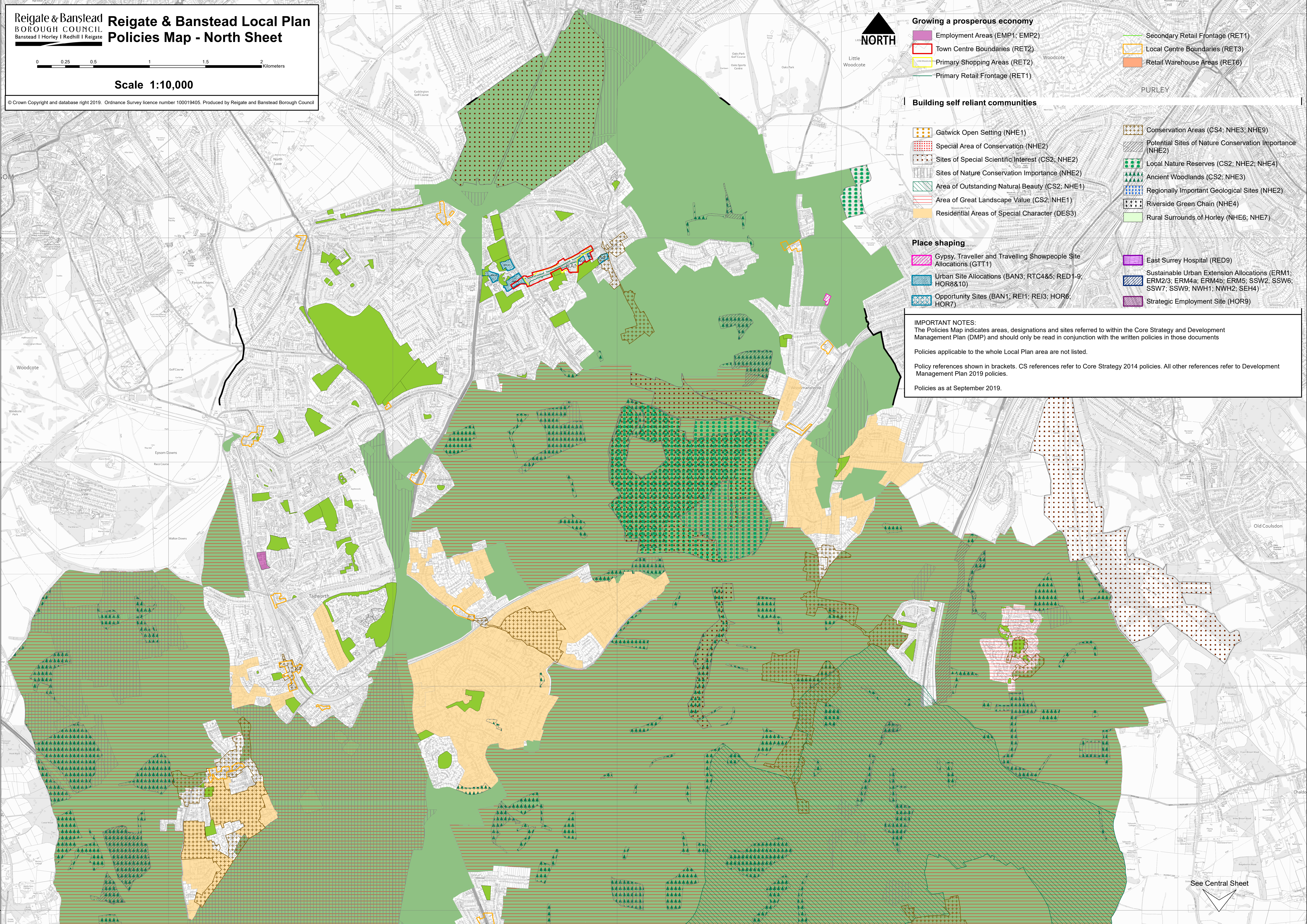
- Gypsy, Traveller and Travelling Showpeople Site Allocations (GTT1)
- Urban Site Allocations (BAN3; RTC4&5; RED1-9; HOR8&10)
- Opportunity Sites (BAN1; RE1; RE3; HOR6; HOR7)
- East Surrey Hospital (RED9)
- Sustainable Urban Extension Allocations (ERM1; ERM2/3; ERM4a; ERM4b; ERM5; SSW2; SSW6; SSW7; SSW9; NWH1; NWH2; SEH4)
- Strategic Employment Site (HOR9)

**IMPORTANT NOTES:**  
The Policies Map indicates areas, designations and sites referred to within the Core Strategy and Development Management Plan (DMP) and should only be read in conjunction with the written policies in those documents

Policies applicable to the whole Local Plan area are not listed.

Policy references shown in brackets. CS references refer to Core Strategy 2014 policies. All other references refer to Development Management Plan 2019 policies.

Policies as at September 2019.



See Central Sheet

