



Reigate & Banstead
BOROUGH COUNCIL
Banstead | Horley | Redhill | Reigate

NewLeaf

Spring/Summer 2008



An inspector calls



An interview with the Borough's new Inspector Charlotte Rimmer:

Q: How will the design of the new neighbourhoods affect community safety?

A: Surrey Police use "Secured by Design" - the UK Police flagship initiative supporting the principles of "designing out crime" by use of effective crime prevention and security standards. We have worked with Reigate and Banstead Borough Council's planners from an early stage to plan out crime as far as possible, for instance through ensuring that public spaces are overlooked. We will continue to work with the developers to ensure they build safe homes for residents.

Q: How will you work with new local residents?

A: We will work proactively with residents as they move into the new neighbourhoods. We will support them in setting up Neighbourhood Watch groups and consider establishing a new Neighbourhood Panel. Typically, these Panels meet

once every two months and provide a way for all residents to voice concerns and set local policing priorities for Safer Neighbourhood police officers.

Q: Will you have a base in the new neighbourhoods?

A: Our neighbourhood teams are always looking for satellite bases to allow them to have a presence in the local community. We hold a number of street surgeries and work out of a range of venues across Horley, for example the Keys Youth Club. The halls in both of the two new neighbourhoods are being designed to provide flexible space suitable for ourselves and others to operate drop-in services or activities.

Q: Do you plan to increase policing levels as Horley grows?

A: We undertake regular reviews of resourcing. As development progresses we will assess the local need for policing and respond appropriately.

YOUR Say?



Do you have something to say about one of the articles you've read? Tell us what you think.

Emily Mottram
Project Manager
Horley Regeneration

01737 276195

horley.regeneration@reigate-banstead.gov.uk

Or Visit
Horley Help Shop:
4 Victoria Square,
Consort Way, Horley

Horley Town Council Offices:
Albert Rooms, 92 Albert
Road, Horley



Design by MAD Ideas®
01293 773085 www.madideas.com

Dear Resident,

The new season has arrived and the next phase of the Horley improvement works are now underway.

You may have noticed the developments taking place in and around Horley and are probably wondering what's going on and how these changes will benefit you.

We aim to answer some of these questions, as well as updating you on current projects in the pipeline including the improvements to Horley station and the street scene, the arrival of the new Horley neighbourhoods, and a special Q&A with the Borough's new Police Inspector.

Thank you for all of your comments and feedback on the last edition of New Leaf.

We hope that you will find this second edition of New Leaf both useful and informative in keeping you up to date with the continued investment in Horley.



news from THE STREETS RH6

With the growth of Horley, there is a renewed sense of energy. Our priority is to enhance the town centre, improving public areas to make the town more attractive and accessible to all.

Reigate and Banstead Borough Council and Surrey County Council are currently preparing design proposals to create a place full of colour and activity - one people will want to interact with and spend time in rather than whizz by.

What are we proposing for Horley town centre?

- Enhanced public spaces, creation of small squares and landscaped areas
- New and consistent lighting, seating and signage
- Improved key junctions in the town centre
- New pedestrianised areas

Last year, Horley took home the Silver Award in the South East in Bloom Awards.

Colourful hanging baskets sponsored by local businesses, councillors and residents will be seen around the town during the Summer. We want to provide permanent landscaping to create an even brighter Horley, all year round.

By creating an attractive environment for new and existing business, Horley's economic future will be secured.

There will be formal consultation on the design proposals in the Spring. Look out for further information in Horley Help Shop or check the website (details on back page).

If designs are approved, funding will need to be sought through public investment and development contributions. It is possible works could start later in 2008 if all goes according to plan.



Next issue of New Leaf is landing on YOUR doorstep in Autumn!

CHECK OUT:

www.reigate-banstead.gov.uk/horley-regeneration/





New community given go ahead

Development of the 1,510-home new neighbourhood and community facilities at Meath Green, in the north west of Horley, could get under way within a year.

Developers from the North West Sector consortium anticipate starting works in early 2009, including construction of the western access road from the A217. They then intend building the residential development in four phases from late 2009-2015, however, these are only provisional dates at the moment.

The development was given the go ahead last year, subject to finalising a legal agreement which secures contributions towards the infrastructure and community facilities needed to support the new neighbourhood.



We will ensure that the development will deliver high quality design, appropriate affordable housing and sustainable energy.

We will work with our partners to ensure the range of community benefits including the new neighbourhood centre, cycle and pedestrian links are delivered in a timely manner.

Cllr Dr Daniel Poulter, Executive Member for Regeneration and Transport



Photo: Cllr Dr Daniel Poulter and Cllr Michael Miller visiting works already under way for Horley's North East sector development

New rooms for Albert

Horley Town Council's community hall in Albert Road will be having a refurbishment this year.

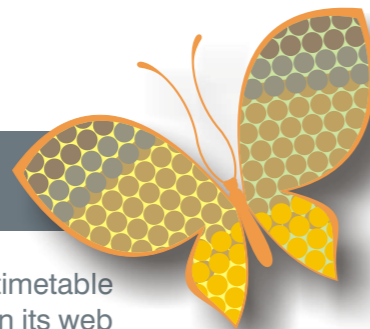
Improvements include:

- Update to main hall with better facilities for hirers
- Extended car park
- Rebuild of offices and new private meeting rooms
- New entrance hall
- New toilets

Further details and timetable will be announced on its web site:

www.horleysurrey-tc.gov.uk

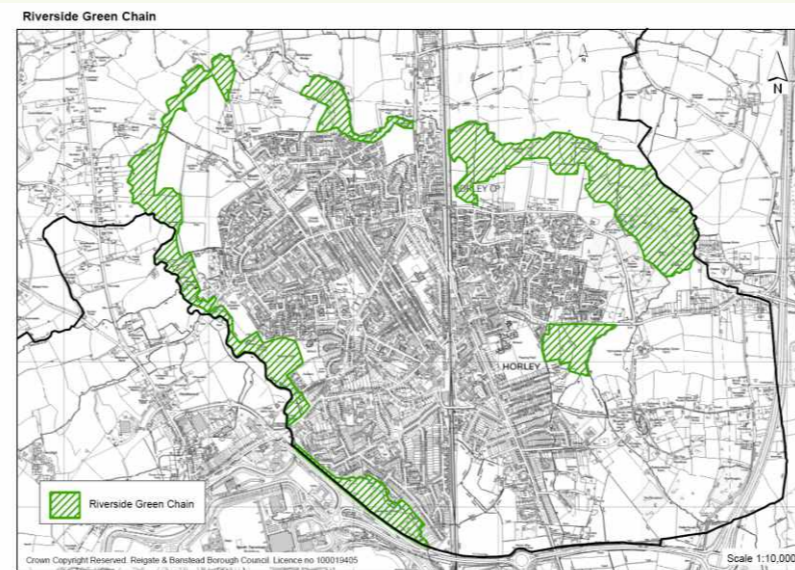
Horley Town Council has recently vacated its offices next to the old Horley Fire Station. The council can be contacted at its temporary accommodation in its Portakabin in the rear car park.



All fired up

Planning permission has been given to convert the old Horley Fire Station on Albert Road into a new Youth Centre for Horley. Surrey County Councillor Kay Hammond said "We are delighted that the green light has been given for the conversion works to start and hope to have the new centre open in 2009. We have worked closely with local young people in developing proposals for the centre." Surrey County Council plan to commence works later this year.

Horley's new green chain



The Horley Master Plan set out proposals to establish a new Riverside Green Chain adjacent to the River Mole and Burstow Stream to the west, north and east of Horley.

This will consist of 56 hectares of new informal recreation spaces where people can walk, cycle and relax as well as spaces that provide wildlife habitats. The green

chain will be completed on a phased basis with the largest elements being the new areas created adjacent to the two new neighbourhoods. Parts of the green chain are already in place at Emlyn Meadows, Riverside Walk and River Mole Park. Local residents and interest groups will have opportunities to be involved in proposals for how these spaces are designed, managed and used.



FULL STEAM AHEAD

Work is chugging along nicely at the new **£1m** Transport Interchange at Horley Station due to be completed in April

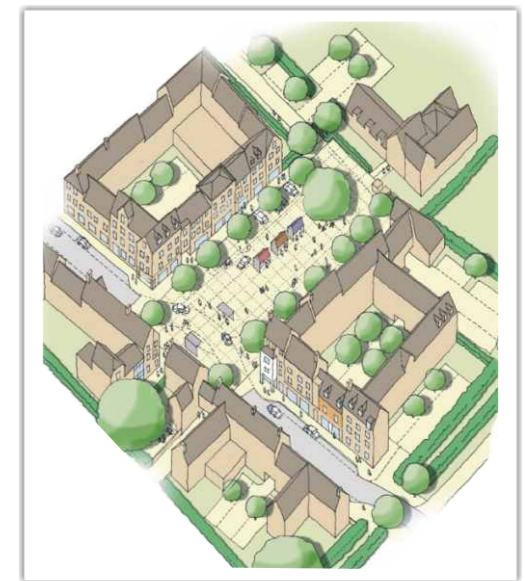
Central perks

Neighbourhood centres are proposed in the North East and North West Sectors to meet the needs of new and existing residents.

Both new neighbourhoods will have a community hall and local shops.

In the larger North West Sector, there will be provision for a doctors' surgery, faith group and nursery.

Primary schools will be built in both of the new neighbourhood centres to cater for the increased population.



Drawing: Neighbourhood centre proposed for North West sector