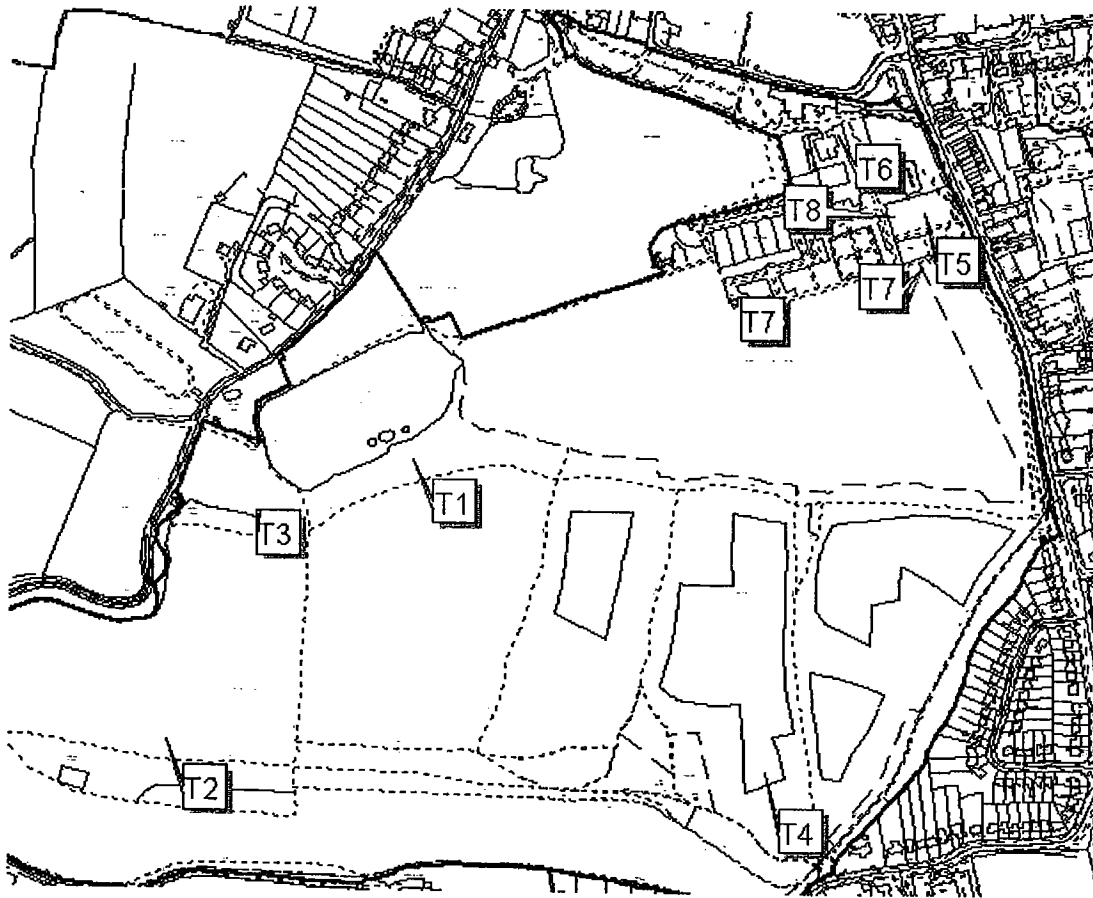


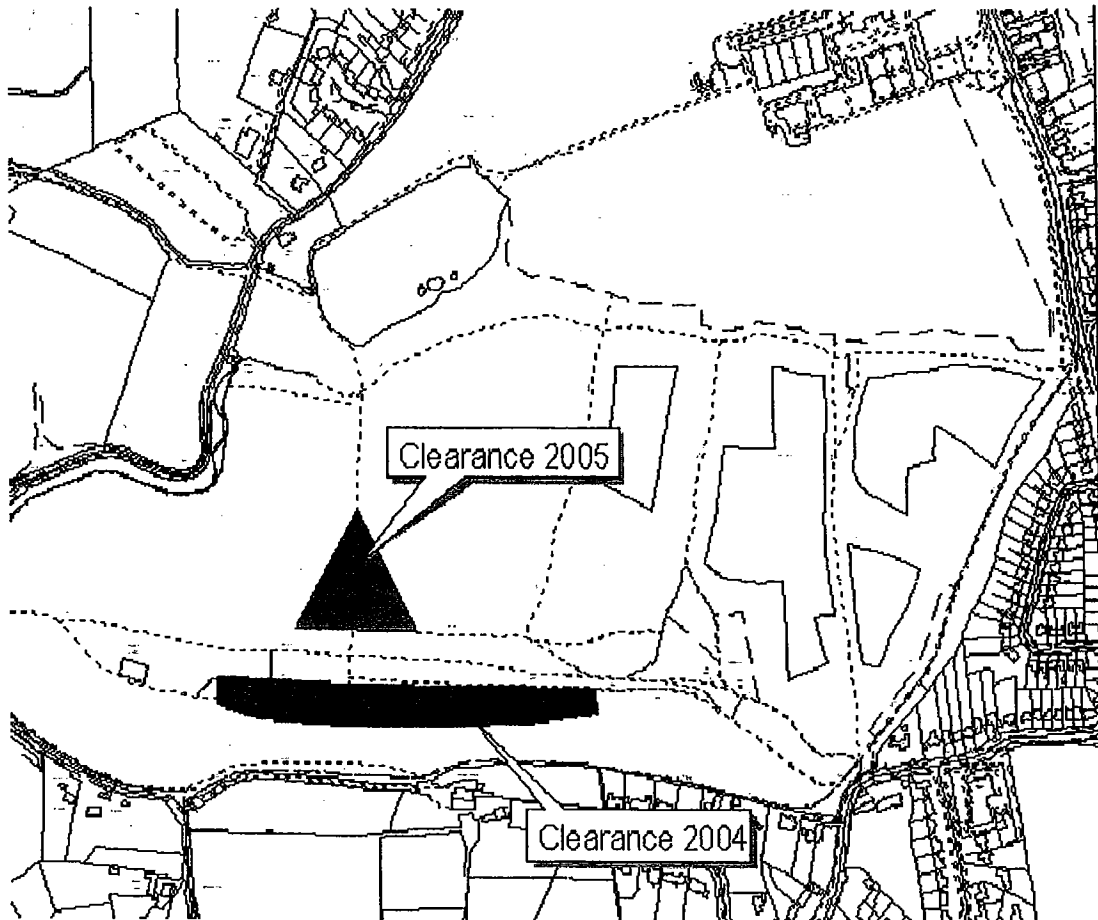
Champion Trees



View Point Clearance

As part of the Countryside Stewardship Scheme for Priory Park there is an ongoing plan to remove trees from around the Plateau to reopen the vistas of the North and South Downs and the Wealds.

The plan is to remove 5 ha of trees, scrub and natural regeneration over the next 10 years. Although the works so far have created a significant visual impact on the site due to the volume of timber being removed, we had only received positive feedback as a result of last year's work.



General Pruning Works

A survey of the trees in Priory Park was carried out late in 2004 as part of the rolling programme of tree inspections on Council owned sites. The purpose was to highlight health and safety issues. The subsequent work due for completion at the end of February 2005 consists mainly of felling dead or dangerous trees, removing deadwood from within canopies and raising the height of tree crowns to prevent obstruction. In accordance with Council policy only dead, diseased or dangerous tree have been highlighted for removal.

The planned works to remove the large subsiding Box Elder tree at the east side of the pond has been postponed. This will be until the spring months when the ground conditions have improved enough to allow the use of heavy lifting equipment.

Tree-type/code	Species	Height	Spread	Age
Sgl/001250	Salix x chrysocoma	8.0m	5.0m	Mature
Sgl/001252	Salix x chrysocoma	14.0m	11.0m	
Sgl/001256	Ilex aquifolium	5.0m	3.0m	Young
Sgl/013836	Unknown species			
Sgl/013840	Unknown species			
Sgl/013844	Unknown species			
Sgl/013848	Unknown species			
Sgl/013852	Unknown species			
Sgl/013856	Unknown species			
Sgl/013860	Unknown species			
Sgl/013864	Unknown species			
Sgl/013868	Unknown species			
Sgl/013872	Unknown species			
Sgl/013876	Unknown species			
Sgl/013880	Unknown species			
Sgl/013884	Unknown species			
Sgl/013888	Quercus robur	15.0m	6.0m	Mature
Sgl/013892	Quercus robur	15.0m	6.0m	Mature
Sgl/013896	Unknown species			
Sgl/013900	Unknown species			
Sgl/013904	Unknown species			
Sgl/013908	Quercus robur			
Sgl/013912	Unknown species	14.0m	7.0m	Mature
Sgl/013916	Unknown species			
Sgl/013920	Unknown species			
Sgl/013924	Unknown species			
Sgl/013928	Unknown species			
Sgl/013932	Unknown species			
Sgl/013936	Unknown species			
Sgl/013940	Unknown species			
Sgl/013944	Unknown species			
Sgl/013948	Unknown species			
Sgl/013952	Unknown species			
Sgl/013956	Unknown species			
Sgl/013960	Unknown species			
Sgl/013964	Unknown species			
Sgl/013968	Unknown species			

Tree-type/code	Species	Height	Spread	Age
Sgl/013972	Unknown species			
Sgl/013976	Unknown species			
Sgl/013980	Acer negundo	13.0m	8.0m	Mature
Sgl/014012	Acer negundo			
Sgl/014016	Unknown species			
Sgl/014020	Unknown species			
Sgl/014024	Unknown species			
Sgl/014028	Unknown species			
Sgl/014032	Unknown species			
Sgl/014036	Unknown species			
Sgl/014040	Unknown species			
Sgl/014044	Fagus sylvatica	3.0m	1.0m	Young
Sgl/014048	Tilia cordata	3.0m	1.0m	Young
Sgl/014052	Fagus sylvatica	3.0m	1.0m	Young
Sgl/014056	Tilia cordata	3.0m	1.0m	Young
Sgl/014060	Castanea sativa	3.0m	1.0m	Young
Sgl/014064	Tilia cordata	3.0m	1.0m	Young
Sgl/014068	Tilia cordata	3.0m	1.0m	Young
Sgl/014072	Tilia cordata	3.0m	1.0m	Young
Sgl/014076	Tilia cordata	20.0m	7.0m	Mature
Sgl/014080	Tilia cordata	3.0m	1.0m	Young
Sgl/014128	Unknown species			
Sgl/015250	Tilia species	23.0m	8.0m	Mature
Sgl/015252	Tilia species	23.0m	8.0m	Mature
Sgl/015256	Tilia species	23.0m	9.0m	Mature
Sgl/015260	Tilia species	23.0m	8.0m	Mature
Sgl/015264	Tilia species	23.0m	8.0m	Mature
Sgl/015268	Tilia species	23.0m	9.0m	Mature
Sgl/015272	Tilia species	23.0m	9.0m	Mature
Sgl/015276	Tilia species	23.0m	8.0m	Mature
Sgl/015280	Malus species	3.8m	2.0m	Young
Sgl/015284	'Species not known'	6.0m	3.0m	Young
Wdc/022280/11	Unknown species			
Wdc/022280/22	Unknown species			
Wdc/022280/24	Unknown species			
Wdc/022280/25	Unknown species			
Wdc/022280/26	Unknown species			

Tree-type/code	Species	Height	Spread	Age
Wdc/0222280/34	Unknown species			
Wdc/0222280/37	Unknown species			
Wdc/0222280/39	Unknown species			
Wdc/0222280/41	Unknown species			
Sgl/026004	Aesculus hippocastanum	14.0m	7.0m	
Sgl/026008	Acer pseudoplatanus	9.5m	8.0m	
Sgl/026012	Betula pendula	9.5m	8.0m	
Sgl/026016	Amelanchier asiatica	12.0m	5.0m	Early Maturity
Sgl/026020	Fraxinus excelsior	14.0m	4.0m	Early Maturity
Sgl/026024	Acer platanoides	11.0m	4.0m	Early Maturity
Sgl/026028	Acer platanoides	9.0m	2.0m	Early Maturity
Sgl/026032	Taxus baccata	9.0m	3.0m	Early Maturity
Sgl/026036	Taxus baccata	8.5m	5.5m	Early Maturity
Sgl/026040	Tilia cordata	15.0m	6.0m	Early Maturity
Sgl/026044	Aesculus hippocastanum	15.0m	6.0m	Mature
Sgl/026048	Fraxinus excelsior	16.0m	7.0m	Mature
Sgl/026052	Fraxinus excelsior	15.0m	6.0m	Mature
Sgl/026056	Tilia x europaea	18.0m	4.5m	Mature
Sgl/026060	Aesculus hippocastanum	14.0m	6.0m	Mature
Sgl/026064	Aesculus hippocastanum	11.0m	5.0m	Early Maturity
Sgl/026068	Tilia cordata	6.0m	2.0m	Young
Sgl/026072	Tilia cordata	20.0m	7.0m	Mature
Sgl/026076	Tilia cordata	20.0m	7.0m	Mature
Sgl/026080	Tilia cordata	3.0m	1.0m	Young
Sgl/026084	Tilia cordata	3.0m	1.0m	Young
Sgl/026088	Tilia cordata	3.0m	1.0m	Young
Sgl/026092	Castanea sativa	16.0m	5.0m	Mature
Sgl/026096	Tilia cordata	19.0m	6.0m	Mature
Sgl/026100	Tilia cordata	19.0m	6.0m	Mature
Sgl/026104	Castanea sativa	16.0m	6.0m	Mature
Sgl/026108	Tilia cordata	17.0m	6.0m	Mature
Sgl/026112	Tilia cordata	17.0m	6.0m	Mature
Sgl/026116	Castanea sativa	3.0m	1.0m	Young
Sgl/026120	Fagus sylvatica	3.0m	1.0m	Young
Sgl/026124	Fagus sylvatica	3.0m	1.0m	Young
Sgl/026128	Tilia cordata	3.0m	1.0m	Young
Sgl/026132	Tilia cordata	25.0m	5.0m	Mature

Tree-type/code	Species	Height	Spread	Age
Sgl/071784	Fraxinus excelsior	10.0m	4.0m	Early Maturity
Sgl/071788	Crataegus monogyna	3.0m		Early Maturity
Sgl/071792	Crataegus monogyna	3.0m		Early Maturity
Sgl/071796	Ulmus species	16.0m	9.0m	Young
Sgl/071800	Taxus baccata	6.0m	4.0m	Young
Sgl/071804	Acer pseudoplatanus	21.0m	8.0m	Young
Sgl/071808	Aesculus hippocastanum	21.0m	6.0m	Young
Sgl/071812	Aesculus hippocastanum	20.0m	4.0m	Mature
Sgl/071816	Acer pseudoplatanus	19.0m	7.0m	Young
Sgl/071820	Taxus baccata	9.0m	4.0m	Young
Sgl/071824	Ilex aquifolium	11.0m	3.0m	Young
Sgl/071828	Taxus baccata	6.0m	2.0m	Senile
Sgl/071832	Ilex species	7.0m	2.0m	Senile
Sgl/071836	Taxus baccata	11.0m	3.0m	Young
Sgl/071840	Taxus baccata	13.0m	3.0m	Young
Sgl/071844	Cornus mas	7.0m	6.0m	Mature
Sgl/071848	Cornus mas	5.0m	4.0m	Young
Sgl/071852	'Species not in list'	4.0m	3.0m	Senile
Sgl/071856	'Species not in list'	6.0m	4.0m	Senile
Sgl/071860	Ilex aquifolium	7.0m	3.0m	Senile
Sgl/071864	Ilex aquifolium	4.0m	2.0m	Senile
Sgl/071868	Tilia x europaea	22.0m	5.0m	Mature
Sgl/071872	Tilia x europaea	23.0m	3.0m	Mature
Sgl/071876	Quercus robur	15.0m	3.0m	Young
Sgl/071880	Tilia x euchlora			
Sgl/071884	Tilia x europaea			
Sgl/071888	Tilia x europaea			
Sgl/071892	Tilia x europaea			
Sgl/071896	Tilia x europaea			
Sgl/071900	Tilia x europaea			
Sgl/071904	Tilia x europaea			
Sgl/071908	Tilia x europaea			
Sgl/071912	Tilia x europaea			
Sgl/071916	Tilia x europaea			
Sgl/071920	Tilia x europaea			
Sgl/071924	Tilia x europaea			
Sgl/071928	Tilia x europaea			
		25.0m	6.0m	Late Maturity
		23.0m	4.0m	Mature
		7.0m	3.0m	Senile
		22.0m	5.0m	Mature

Tree-type/code	Species	Height	Spread	Age
Sgl/071932	Populus tremula	16.0m	5.0m	Mature
Sgl/071936	Populus tremula	16.0m	5.0m	Mature
Sgl/071940	Populus tremula	18.0m	5.0m	Mature
Sgl/071944	Populus tremula	23.0m	6.0m	Mature
Sgl/071948	Ilex aquifolium	7.0m	3.0m	Mature
Sgl/071952	Ilex aquifolium	12.0m	4.0m	Mature
Sgl/071956	Ilex aquifolium	12.0m	4.0m	Young
Sgl/071960	Ilex aquifolium	7.0m	4.0m	Young
Sgl/071964	Taxus baccata	9.0m	4.0m	Young
Sgl/071968	Tilia x europaea	18.0m	4.0m	Mature
Sgl/071972	Tilia x europaea	19.0m	4.0m	Mature
Sgl/071976	Tilia x europaea	19.0m	4.0m	Mature
Sgl/071980	Tilia x europaea	17.0m	4.0m	Mature
Sgl/071984	Ilex aquifolium	5.0m	3.0m	Senile
Sgl/071988	Fagus sylvatica	25.0m	6.0m	Mature
Sgl/071992	Betula jacquemontii	7.0m	2.0m	Senile
Sgl/071996	Quercus rubra	9.0m	3.0m	Senile
Sgl/073500	Juglans regia	16.0m	5.0m	Young
Sgl/073504	Tilia x europaea			
Sgl/073508	Tilia x europaea			
Sgl/073512	Tilia x europaea			
Sgl/073516	Tilia x europaea			
Sgl/073520	Tilia x europaea			
Sgl/073524	Tilia x europaea			
Sgl/073528	Tilia x europaea			
Sgl/073532	Tilia x europaea			
Sgl/073536	Tilia x europaea			
Sgl/073540	Tilia x europaea			
Sgl/073544	Tilia x europaea			
Sgl/073548	Acer platanoides 'Crimson King'	11.0m	4.0m	Young
Sgl/073552	Quercus robur	4.0m	1.0m	Senile
Sgl/073556	Aesculus hippocastanum	9.0m	4.0m	Young
Sgl/073560	Quercus castaneifolia	6.0m	2.0m	Senile
Sgl/073564	Quercus species	9.0m	2.0m	Senile
Sgl/073568	Cedrus atlantica glauca	12.0m	3.0m	Young
Sgl/073572	Fagus sylvatica	16.0m	5.0m	Mature
Sgl/073576	Populus canescens	20.0m	6.0m	Mature

Tree-type/code	Species	Height	Spread	Age
Sgl/073580	Ulmus species	6.0m	2.0m	Senile
Sgl/073584	Carya ovata	23.0m	7.0m	Mature
Sgl/073588	Taxodium distichum	5.0m	1.0m	Senile
Sgl/073592	Liriodendron tulipifera	17.0m	6.0m	Young
Sgl/073596	Tilia x europaea			
Sgl/073600	Tilia x europaea			
Sgl/073604	Tilia x europaea			
Sgl/073608	Tilia x europaea			
Sgl/073612	Tilia x europaea			
Sgl/073616	Quercus castaneifolia	13.0m	5.0m	Young
Sgl/073620	Taxus baccata	11.0m	4.0m	Young
Sgl/073624	Betula pendula			
Sgl/073628	Pinus radiata			
Sgl/073632	Betula pendula			
Sgl/073636	Pinus radiata			
Sgl/073640	Taxus baccata			
Sgl/073644	Abies	8.0m	3.0m	Young
Sgl/073648	Betula pendula			
Sgl/073652	Chamaecyparis lawsoniana	8.0m	2.0m	Young
Sgl/073656	Ilex aquifolium			
Sgl/073660	Tilia x europaea	24.0m	4.0m	Mature
Sgl/073664	Taxus baccata	9.0m	3.0m	Young
Sgl/073668	Tilia x europaea	20.0m	4.0m	Mature
Sgl/073672	Tilia x europaea	18.0m	4.0m	Mature
Sgl/073676	Larix decidua	24.0m	4.0m	Mature
Sgl/073680	Aesculus hippocastanum	24.0m	4.0m	Mature
Sgl/073688	Unknown species			
Sgl/073692	Unknown species			
Sgl/073696	Unknown species			
Sgl/073700	Fagus sylvatica			
Sgl/073704	Aesculus hippocastanum	15.0m	5.0m	Young
Sgl/073708	Aesculus hippocastanum	16.0m	6.0m	Young
Sgl/073712	Tilia x europaea	18.0m	6.0m	Young
Sgl/073716	Tilia x europaea	20.0m	4.0m	Mature
Sgl/073720	Tilia x europaea	20.0m	4.0m	Mature
Sgl/073724	Ilex aquifolium	23.0m	5.0m	Mature
Sgl/073728	Tilia x europaea	7.0m	3.0m	Senile
		20.0m	3.0m	Young

Tree-type/code	Species	Height	Spread	Age
Sgl/073732	Acer pseudoplatanus	20.0m	5.0m	Young
Sgl/073736	Acer pseudoplatanus	16.0m	4.0m	Young
Sgl/073740	Taxus baccata	26.0m	8.0m	Mature
Sgl/073744	Taxus baccata	12.0m	3.0m	Young
Sgl/073748	Fagus sylvatica			
Sgl/073752	Tilia cordata			
Sgl/073756	Ilex aquifolium			
Sgl/073760	Ilex aquifolium			
Sgl/073764	Aesculus hippocastanum	18.0m	7.0m	Mature
Sgl/073768	Taxus baccata	10.0m	3.0m	Young
Sgl/073772	Tilia cordata			
Sgl/073776	Tilia cordata			
Sgl/073780	Sorbus species	7.0m	4.0m	Mature
Sgl/073784	Tilia cordata			
Sgl/073788	Tilia cordata	18.0m	5.0m	Mature
Sgl/073792	Unknown species			
Sgl/073796	Unknown species			
Sgl/073800	Unknown species			
Sgl/073804	Unknown species			
Sgl/073808	Unknown species			
Sgl/073812	Tilia cordata	16.0m	3.0m	Young
Sgl/073816	Unknown species			
Sgl/073820	Unknown species			
Sgl/073824	Unknown species			
Sgl/073828	Tilia species	18.0m	5.0m	Young
Sgl/073832	Tilia cordata	13.0m	4.0m	Young
Sgl/073836	Unknown species			
Sgl/073840	Unknown species			
Sgl/073844	Malus species	5.0m	4.1m	Mature
Sgl/073848	Unknown species			
Sgl/073852	Unknown species			
Sgl/073856	Unknown species			
Sgl/073860	Unknown species			
Sgl/073864	Unknown species			
Sgl/073868	Unknown species			
Sgl/073872	Unknown species			
Sgl/073876	Unknown species			

Tree-type/code	Species	Height	Spread	Age
Sgl/073880	Unknown species			
Sgl/073884	Unknown species			
Sgl/073888	Unknown species			
Sgl/073892	Unknown species			
Sgl/073896	Unknown species			
Sgl/073900	Unknown species			
Sgl/073904	Unknown species			
Sgl/073908	Unknown species			
Sgl/073912	Unknown species			
Sgl/073916	Unknown species			
Sgl/073920	Unknown species			
Sgl/073924	Unknown species			
Sgl/073928	Unknown species			
Sgl/073932	Unknown species			
Sgl/073936	Unknown species			
Sgl/073940	Unknown species			
Sgl/073944	Acer pseudoplatanus	20.0m	5.0m	Mature
Sgl/073948	Fraxinus excelsior	14.0m	5.0m	Young
Sgl/073952	Quercus robur	18.0m	6.0m	Mature
Sgl/073956	Acer pseudoplatanus	19.0m	6.0m	Mature
Sgl/073960	Unknown species			
Sgl/073964	Acer pseudoplatanus	12.0m	3.0m	Young
Sgl/073968	Aesculus hippocastanum	20.0m	6.0m	Mature
Sgl/073972	Unknown species			
Sgl/073976	Unknown species			
Sgl/073980	Unknown species			
Sgl/073984	Unknown species			
Sgl/073988	Unknown species			
Sgl/073992	Unknown species			
Sgl/073996	Unknown species			
Sgl/074000	Acer pseudoplatanus	6.0m		Senile
Sgl/074004	Unknown species			
Sgl/074012	Unknown species			
Sgl/074016	Tilia x europaea	17.0m	4.0m	Mature
Sgl/074020	Unknown species			
Sgl/074024	Unknown species			
Sgl/074028	Unknown species			

Tree-type/code	Species	Height	Spread	Age
Sgl/074032	Unknown species			
Sgl/074036	Unknown species			
Sgl/074040	Castanea sativa	16.0m	6.0m	Mature
Sgl/074044	Castanea sativa	15.0m	6.0m	Mature
Sgl/074048	Castanea sativa	17.0m	7.0m	Mature
Sgl/074052	Unknown species			
Sgl/074056	Unknown species			
Sgl/074060	Tilia cordata	9.0m	3.0m	Young
Sgl/074064	Tilia cordata	10.0m	3.0m	Young
Sgl/074068	Aesculus hippocastanum	11.0m	4.0m	Young
Sgl/074072	Unknown species			
Sgl/074076	Unknown species			
Sgl/074080	Castanea sativa	14.0m	6.0m	Mature
Sgl/074084	Tilia cordata	16.0m	4.0m	Young
Sgl/074088	Fagus sylvatica	20.0m	6.0m	Mature
Sgl/074092	Aesculus hippocastanum			
Sgl/074096	Aesculus hippocastanum			
Sgl/074100	Unknown species			
Sgl/074104	Fagus sylvatica	20.0m	7.0m	Mature
Sgl/074108	Unknown species			
Sgl/074112	Unknown species			
Sgl/074116	Unknown species			
Sgl/074120	Unknown species			
Sgl/074124	Aesculus hippocastanum	16.0m	4.0m	Young
Sgl/074128	Unknown species			
Sgl/074132	Unknown species			
Sgl/074136	Unknown species			
Sgl/074140	Aesculus hippocastanum	18.0m	4.0m	Mature
Sgl/074144	Aesculus hippocastanum	17.0m	4.0m	Mature
Sgl/074148	Unknown species			
Sgl/074152	Aesculus hippocastanum	17.0m	3.0m	Young
Sgl/074156	Tilia x europaea	19.0m	5.0m	Mature
Sgl/074160	Prunus species	8.0m	2.0m	Senile
Sgl/074164	Prunus species	8.0m	2.0m	Senile
Sgl/074168	Tilia x europaea	20.0m	5.0m	Mature
Sgl/074172	Tilia x europaea	21.0m	4.0m	Mature
Sgl/074176	Tilia x europaea	17.0m	4.0m	Mature

Tree-type/code	Species	Height	Spread	Age
Sgl/074180	Tilia x europaea	16.0m	4.0m	
Sgl/074184	Unknown species			
Sgl/074188	Unknown species			
Sgl/074192	Unknown species			
Sgl/074196	Unknown species			
Sgl/074200	Unknown species			
Sgl/074204	Unknown species			
Sgl/074208	Unknown species			
Sgl/074212	Aesculus hippocastanum	20.0m	7.0m	Mature
Sgl/074216	Quercus rubra	23.0m	8.1m	Mature
Sgl/074220	Ilex aquifolium	6.0m	2.0m	Senile
Sgl/074224	Tilia cordata	12.0m	3.0m	Senile
Sgl/074228	Unknown species			
Sgl/074232	Unknown species			
Sgl/074236	Unknown species			
Sgl/074240	Unknown species			
Sgl/074244	Tilia cordata	19.0m	6.0m	Mature
Sgl/074248	Unknown species			
Sgl/074252	Unknown species			
Sgl/074256	Unknown species			
Sgl/074260	Unknown species			
Sgl/074264	Unknown species			
Sgl/074268	Unknown species			
Sgl/074272	Unknown species			
Sgl/074276	Unknown species			
Sgl/074280	Unknown species			
Sgl/074284	Unknown species			
Sgl/074288	Aesculus hippocastanum	16.0m	5.0m	Young
Sgl/074292	Fagus sylvatica	22.0m	5.0m	Mature
Sgl/074296	Fagus sylvatica	23.0m	7.0m	Mature
Sgl/074300	Tilia x europaea	19.0m	5.0m	Mature
Sgl/074304	Tilia x europaea	19.0m	6.0m	Mature
Sgl/074308	Populus nigra	24.0m	4.0m	Mature
Sgl/074312	Tilia x europaea	23.0m	5.0m	Mature
Sgl/074316	Unknown species			
Sgl/074320	Unknown species			
Sgl/074324	Unknown species			

Tree-type/code	Species	Height	Spread	Age
Sgl/074328	Unknown species			
Sgl/074332	Unknown species	20.0m	6.0m	Mature
Sgl/074336	Tilia x europaea	15.0m	2.0m	Young
Sgl/074340	Tilia x europaea			
Sgl/074344	Unknown species	16.0m	4.0m	Mature
Sgl/074348	Pinus species	18.0m	4.0m	Mature
Sgl/074352	Larix decidua			
Sgl/074356	Unknown species			
Sgl/074360	Unknown species			
Sgl/074364	Unknown species			
Sgl/074368	Unknown species			
Sgl/074372	Unknown species			
Sgl/074376	Unknown species			
Sgl/074380	Unknown species			
Sgl/074384	Unknown species			
Sgl/074388	Unknown species			
Sgl/074392	Tilia cordata	14.0m	4.0m	Young
Sgl/074396	Ulmus procera	6.0m		Senile
Sgl/074400	Aesculus hippocastanum	12.0m	3.0m	Young
Sgl/074404	Aesculus hippocastanum	12.0m		Young
Sgl/074408	Tilia x europaea	19.0m	6.0m	Mature
Sgl/074412	Unknown species			
Sgl/074416	Unknown species			
Sgl/074420	Unknown species			
Sgl/074424	Unknown species			
Sgl/074428	Taxus baccata	10.0m	3.0m	Senile
Sgl/074432	Taxus baccata	10.0m	3.0m	Senile
Sgl/074436	Acer pseudoplatanus	20.0m	7.0m	Mature
Sgl/074440	Taxus baccata	11.0m	3.0m	Mature
Sgl/074444	Aesculus hippocastanum	17.0m	6.0m	Young
Sgl/074448	Unknown species			
Sgl/074452	Quercus ilex	17.0m	6.0m	Young
Sgl/074456	Unknown species			
Sgl/074460	Taxus baccata	11.0m	3.0m	Senile
Sgl/074464	Taxus baccata	11.0m	3.0m	Mature
Sgl/074468	Tilia x europaea	18.0m	6.0m	Mature
Sgl/074472	Tilia x europaea	19.0m	6.0m	Mature

Tree-type/code	Species	Height	Spread	Age
Sgl/074476	Taxus baccata	7.0m	3.0m	Senile
Sgl/074480	Taxus baccata	11.0m	3.0m	Senile
Sgl/074484	Taxus baccata	10.0m	3.0m	Senile
Sgl/074488	Taxus baccata	11.0m	3.0m	Senile
Sgl/074492	Taxus baccata	7.0m	3.0m	Senile
Sgl/074496	Taxus baccata	7.0m	3.0m	Senile
Sgl/076250	Unknown species			
Sgl/076252	Unknown species			
Sgl/076256	Unknown species			
Sgl/076260	Unknown species			
Sgl/076264	Unknown species			
Sgl/076268	Taxus baccata	8.0m	3.0m	Young
Sgl/076272	Aesculus hippocastanum	14.0m	4.0m	Young
Sgl/076276	Aesculus hippocastanum	14.0m	4.0m	Young
Sgl/076280	Tilia x europaea	18.0m	6.0m	Mature
Sgl/076284	Tilia x europaea	18.0m	5.0m	Mature
Sgl/076288	Unknown species			
Sgl/076292	Unknown species			
Sgl/076296	Unknown species			
Sgl/076300	Unknown species			
Sgl/076304	Unknown species			
Sgl/076308	Tilia x europaea	18.0m	6.0m	Mature
Sgl/076312	Tilia x europaea	13.0m	4.0m	Mature
Sgl/076316	Unknown species			
Sgl/076320	Unknown species			
Sgl/076324	Unknown species			
Sgl/076328	Unknown species			
Sgl/076332	Fagus sylvatica	19.0m	4.0m	Mature
Sgl/076336	Tilia x europaea	20.0m	7.0m	Mature
Sgl/076340	Unknown species	17.0m	4.0m	Young
Sgl/076344	Tilia x europaea	6.0m	2.0m	
Sgl/076348	Tilia x europaea	20.0m	7.0m	Mature
Sgl/076352	Ilex aquifolium	14.0m	4.0m	Mature
Sgl/076356	Tilia x europaea	17.0m	4.0m	Mature
Sgl/076360	Tilia x europaea	20.0m	5.0m	Mature
Sgl/076364	Tilia x europaea			
Sgl/076368	Acer pseudoplatanus			

Tree-type/code	Species	Height	Spread	Age
Sg1/076372	Ilex aquifolium	7.0m	3.0m	
Sg1/076376	Ilex aquifolium	5.0m	2.0m	
Sg1/076380	Aesculus hippocastanum	17.0m	5.0m	Young
Sg1/076384	Ilex aquifolium	5.0m	2.0m	
Sg1/076388	Ilex aquifolium	5.0m	2.0m	
Sg1/076392	Ilex aquifolium	14.0m	2.0m	Young
Sg1/076396	Tilia x europaea	9.0m	2.0m	
Sg1/076400	Tilia x europaea			
Sg1/076404	Unknown species			
Sg1/076408	Tilia x europaea	18.0m	4.0m	Mature
Sg1/076412	Unknown species			
Sg1/076416	Tilia x europaea	15.0m	2.0m	Young
Sg1/076420	Tilia x europaea	13.0m	2.0m	Young
Sg1/076424	Tilia x europaea	8.0m	2.0m	Young
Sg1/076428	Aesculus hippocastanum	18.0m	5.0m	Mature
Sg1/076432	Aesculus hippocastanum	17.0m	5.0m	Mature
Sg1/076436	Ilex aquifolium	4.0m	1.0m	
Sg1/076440	Ilex aquifolium	4.0m	1.0m	
Sg1/076444	Unknown species			
Sg1/076448	Unknown species			
Sg1/076452	Tilia x europaea	18.0m	6.0m	Mature
Sg1/076456	Aesculus hippocastanum	9.0m	3.0m	Young
Sg1/076460	Aesculus hippocastanum	15.0m	3.0m	Young
Sg1/076464	Aesculus hippocastanum	15.0m	3.0m	Young
Sg1/076468	Aesculus hippocastanum	15.0m	3.0m	Young
Sg1/076472	Tilia x europaea	17.0m	4.0m	Mature
Sg1/076476	Unknown species			
Sg1/076480	Aesculus hippocastanum	13.0m	3.0m	Young
Sg1/076484	Tilia x europaea	17.0m	4.0m	Mature
Sg1/076488	Unknown species			
Sg1/076492	Tilia species	18.0m	3.0m	Young
Sg1/076496	Aesculus hippocastanum	15.0m	3.0m	Young
Sg1/076500	Aesculus hippocastanum	18.0m	5.0m	Young
Sg1/076504	Tilia x europaea	15.0m	4.0m	Young
Sg1/076508	Aesculus hippocastanum	9.0m	3.0m	Young
Sg1/076512	Aesculus hippocastanum	15.0m	3.0m	Mature
Sg1/076516	Aesculus hippocastanum	10.0m	3.0m	Young

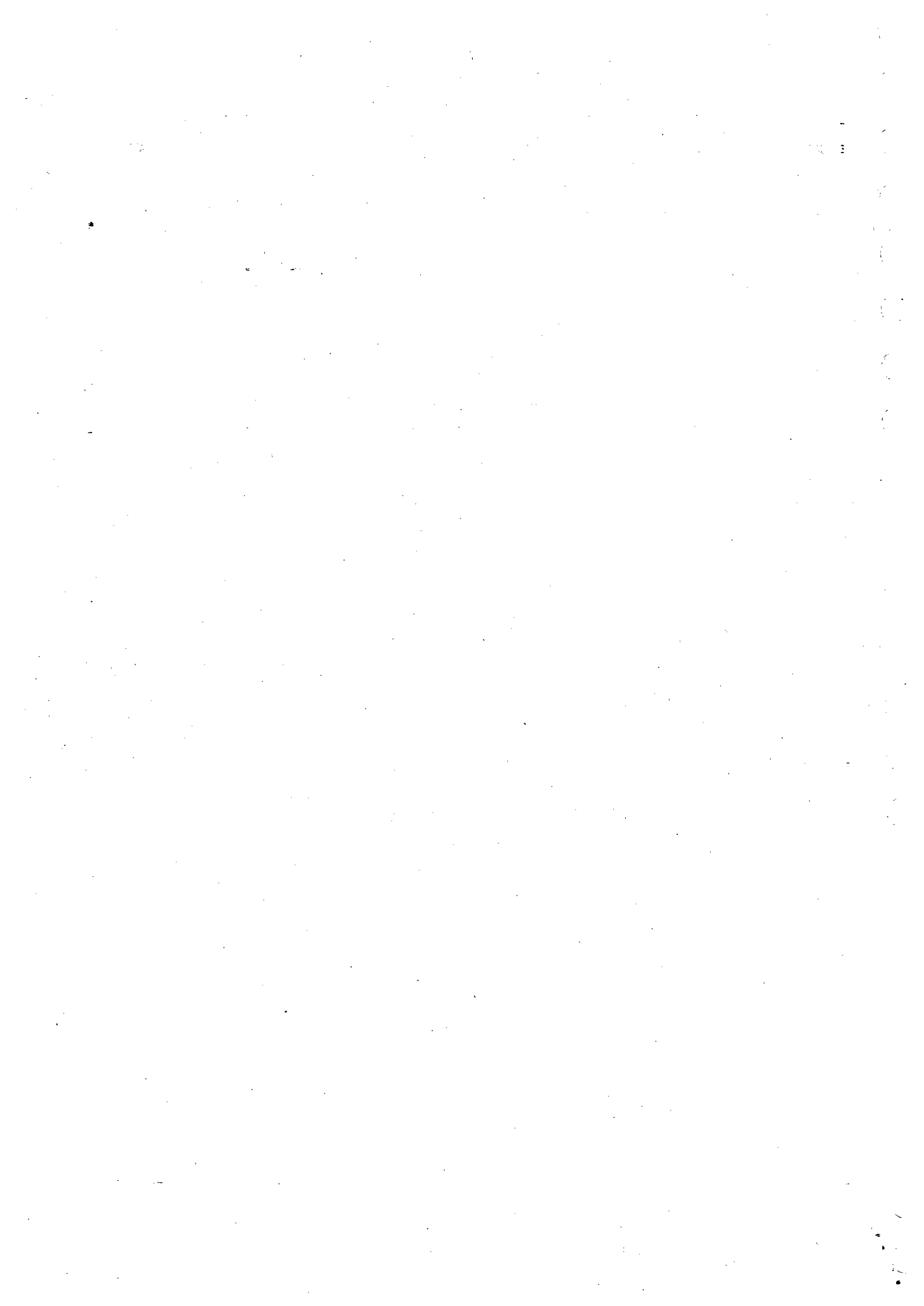
Tree-type/code	Species	Height	Spread	Age
Sgl/076520	Aesculus hippocastanum	10.0m	3.0m	Young
Sgl/076524	Unknown species			
Sgl/076528	Unknown species			
Sgl/076532	Tilia x europaea	17.0m	4.0m	Young
Sgl/076536	Unknown species			
Sgl/076540	Unknown species			
Sgl/076544	Unknown species			
Sgl/076548	Unknown species			
Sgl/076552	Unknown species			
Sgl/076556	Unknown species			
Sgl/076560	Unknown species			
Sgl/076564	Unknown species			
Sgl/076568	Unknown species			
Sgl/076572	Unknown species			
Sgl/076576	Unknown species			
Sgl/076580	Unknown species			
Sgl/076584	Unknown species			
Sgl/076588	Tilia species	8.0m		Senile
Sgl/076592	Tilia species	8.0m		Senile
Sgl/076596	Tilia species	8.0m		Senile
Sgl/076600	Tilia species	8.0m		Senile
Sgl/076604	Tilia species	8.0m		Senile
Sgl/076608	Tilia species	8.0m		Senile
Sgl/076612	Tilia species	8.0m		Senile
Sgl/076616	Tilia species	8.0m		Senile
Sgl/076620	Tilia species	8.0m		Senile
Sgl/076624	Tilia species	8.0m		Senile
Sgl/076628	Tilia species	8.0m		Senile
Sgl/076632	Tilia species	8.0m		Senile
Sgl/076636	Tilia species	8.0m		Senile
Sgl/076640	Tilia species	8.0m		Senile
Sgl/076644	Tilia species	8.0m		Senile
Sgl/076648	Tilia species	8.0m		Senile
Sgl/076652	Tilia species	8.0m		Senile
Sgl/076656	Tilia species	8.0m		Senile
Sgl/076660	Tilia species	8.0m		Senile
Sgl/076664	Tilia species	8.0m		Senile

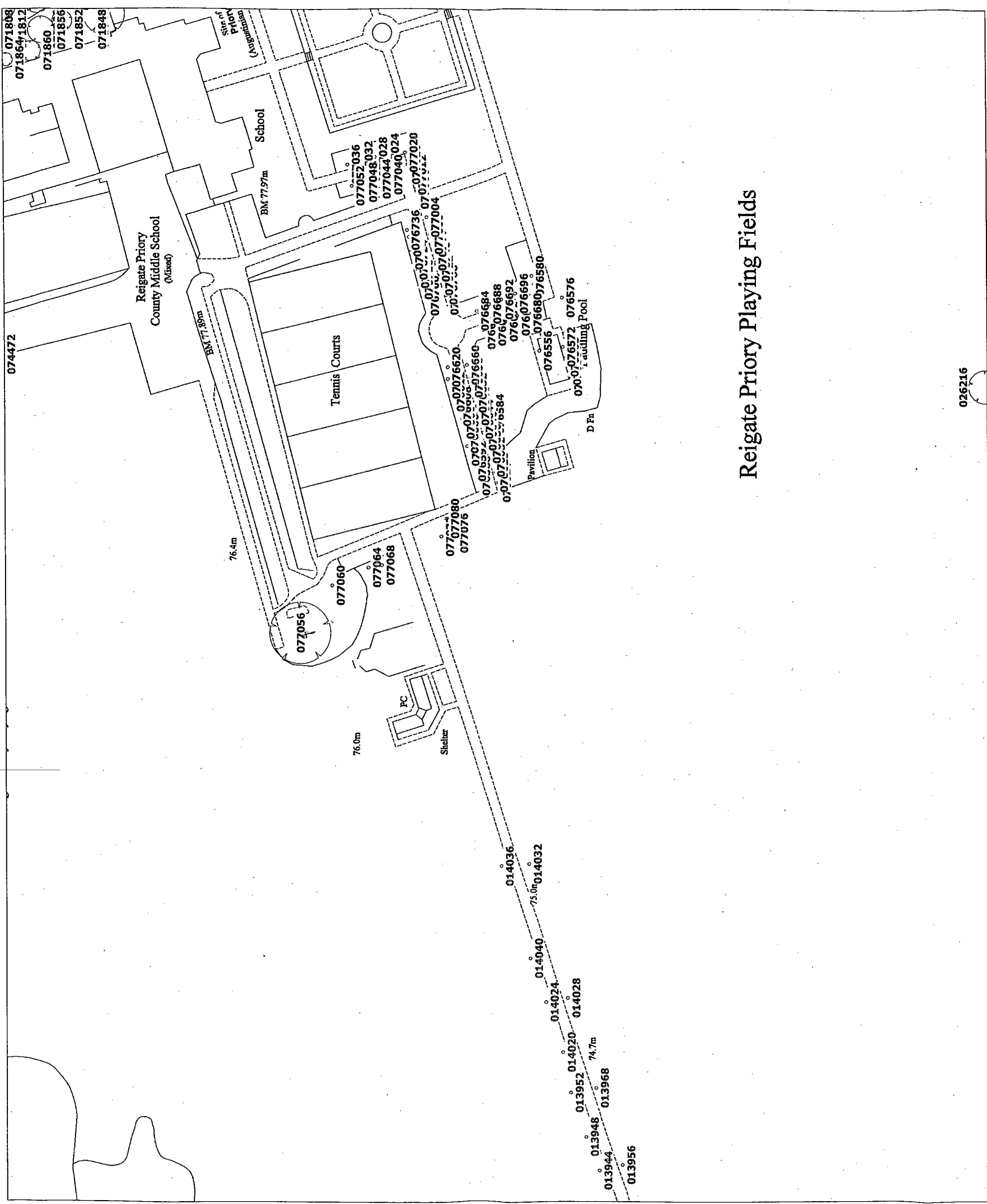
Tree-type/code	Species	Height	Spread	Age
Sgl/077068	Unknown species			
Sgl/077072	Unknown species			
Sgl/077076	Unknown species			
Sgl/077080	Unknown species			
Sgl/077084	Unknown species			
Sgl/077088	Unknown species			
Sgl/077092	Unknown species			
Sgl/077096	Tilia species	23.0m	6.0m	Mature
Sgl/077100	Unknown species			
Sgl/077104	Unknown species			
Sgl/077108	Unknown species			
Sgl/077112	Unknown species			
Sgl/077116	Unknown species			
Sgl/077120	Fraxinus excelsior	25.0m	8.0m	Mature
Sgl/077124	Unknown species			
Sgl/077128	Unknown species			
Sgl/077132	Unknown species			
Sgl/077136	Unknown species			
Sgl/077140	Populus species			
Sgl/077144	Quercus robur	24.0m	7.0m	Mature
Sgl/077148	Fraxinus excelsior	25.0m	8.0m	Mature
Sgl/077152	Fagus sylvatica	27.0m	9.0m	Mature
Sgl/077156	Tilia species	27.0m	8.0m	Mature
Sgl/077160	Tilia species	23.0m	7.0m	Mature
Sgl/077164	Tilia species	23.0m	7.0m	Mature
Sgl/077168	Tilia species	23.0m	6.0m	Mature
Sgl/077172	Tilia species	21.0m	5.0m	Mature
Sgl/077176	Tilia species	23.0m	6.0m	Mature
Sgl/077180	Quercus robur	23.0m	6.0m	Mature
Sgl/077184	Tilia species	25.0m	8.0m	Mature
Sgl/077188	Tilia species	23.0m	6.0m	Mature
Sgl/077192	Tilia species	23.0m	6.0m	Mature
Sgl/077196	Tilia x europaea	23.0m	6.0m	Mature
Sgl/077200	Tilia x europaea	21.0m	4.0m	
Sgl/077204	Tilia x europaea	21.0m	4.0m	
Sgl/077208	Unknown species	21.0m	4.0m	
Sgl/077212	Unknown species			

Tree-type/code	Species	Height	Spread	Age
Sgl/077216	Unknown species			
Sgl/077220	Unknown species			
Sgl/077224	Quercus robur	25.0m	7.0m	Mature
Sgl/077228	Quercus robur	25.0m	7.0m	Mature
Sgl/077232	Tilia x europaea	21.0m	4.0m	
Sgl/077236	Tilia x europaea	21.0m	4.0m	
Sgl/077240	Quercus robur	25.0m	7.0m	Mature
Sgl/077244	Tilia x europaea	21.0m	4.0m	
Sgl/078250	Tilia x europaea	21.0m	4.0m	
Sgl/078252	Taxus baccata	11.0m	3.0m	Young
Sgl/078256	Tilia x europaea	21.0m	6.0m	
Sgl/078260	Ilex aquifolium	13.1m	7.0m	Young
Sgl/078264	Tilia x europaea	21.0m	3.0m	
Sgl/078268	Tilia x europaea	21.0m	3.0m	
Sgl/078272	Quercus robur	25.0m	6.0m	Mature
Sgl/078276	Unknown species			
Sgl/078280	Unknown species			
Sgl/078284	Unknown species			
Sgl/078288	Unknown species			
Sgl/078292	Unknown species			
Sgl/078296	Unknown species		5.0m	
Sgl/078300	Unknown species			
Sgl/078304	Unknown species			
Sgl/078308	Unknown species			
Sgl/078312	Unknown species			
Sgl/078316	Unknown species		5.0m	
Sgl/078320	Unknown species		5.0m	
Sgl/078324	Tilia x europaea	21.0m	4.0m	
Sgl/078328	Tilia x europaea	21.0m	4.0m	
Sgl/078332	Tilia x europaea	21.0m	4.0m	
Sgl/078336	Tilia x europaea	21.0m	4.0m	
Sgl/078340	Tilia x europaea	21.0m	4.0m	
Sgl/078344	Tilia x europaea	21.0m	4.0m	
Sgl/078348	Tilia x europaea	21.0m	4.0m	
Sgl/078352	Unknown species	5.0m	3.0m	
Sgl/078356	Tilia x europaea	21.0m	4.0m	
Sgl/078360	Tilia x europaea	21.0m	4.0m	

Tree-type/code	Species	Height	Spread	Age
Sgl/078364	Unknown species		3.0m	
Sgl/078368	Tilia x europaea	21.0m	5.0m	
Sgl/078372	Tilia x europaea	21.0m	5.0m	
Sgl/078376	Tilia x europaea	21.0m	5.0m	
Sgl/078380	Tilia x europaea	24.0m	8.0m	
Sgl/078384	Tilia x europaea	21.0m	5.0m	
Sgl/078388	Quercus robur	26.0m	12.0m	
Sgl/078392	Carpinus betulus	22.0m	5.0m	

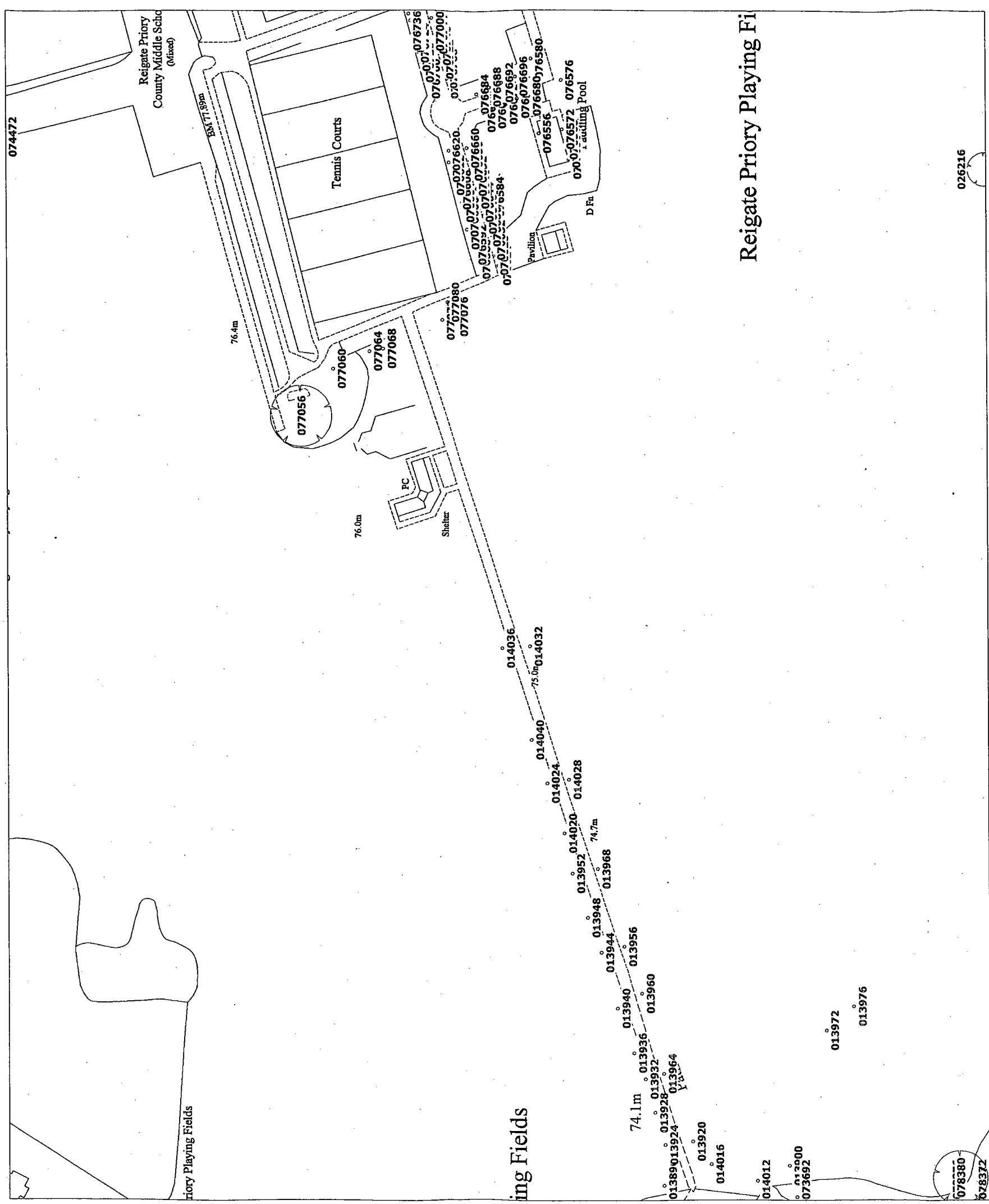
Overall total: 665 trees





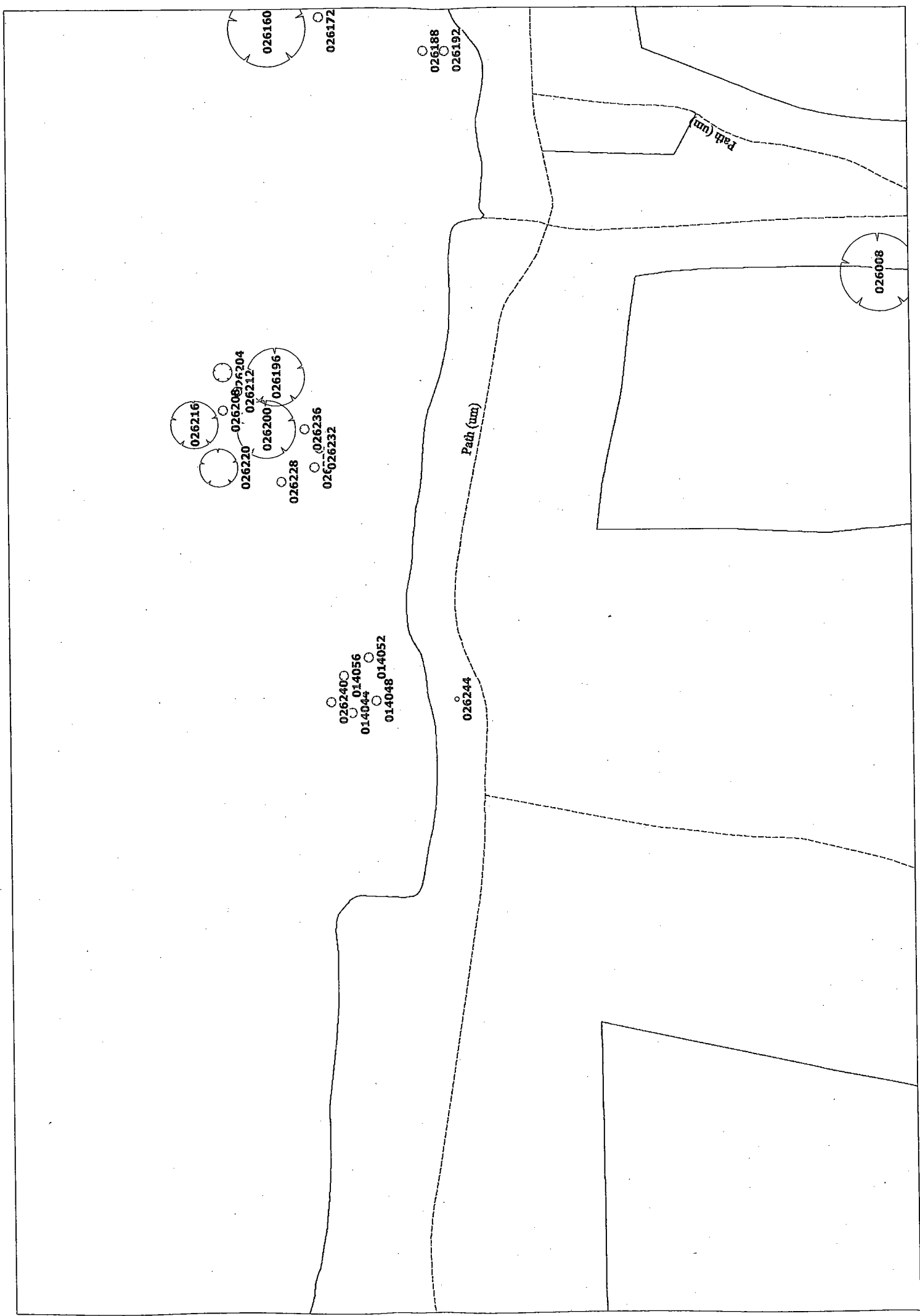
Priory Park, Reigate @ 1:2500 (O/s)

Original scale: 1:2500 Printed scale: Non-standard



Priory Park, Reigate @ 1:2500 (O/s)

Original scale: 1:2500 Printed scale: Non-standard



Priory Park, Reigate @ 1:2500 (O/s)

Original scale: 1:2500 Printed scale: Non-standard

